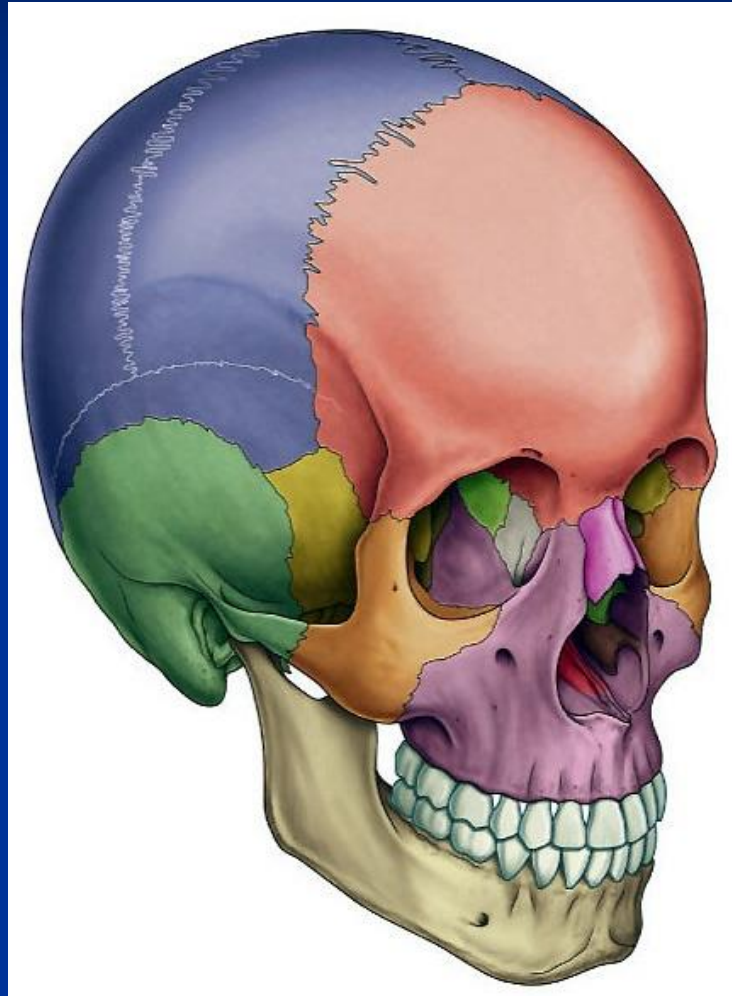


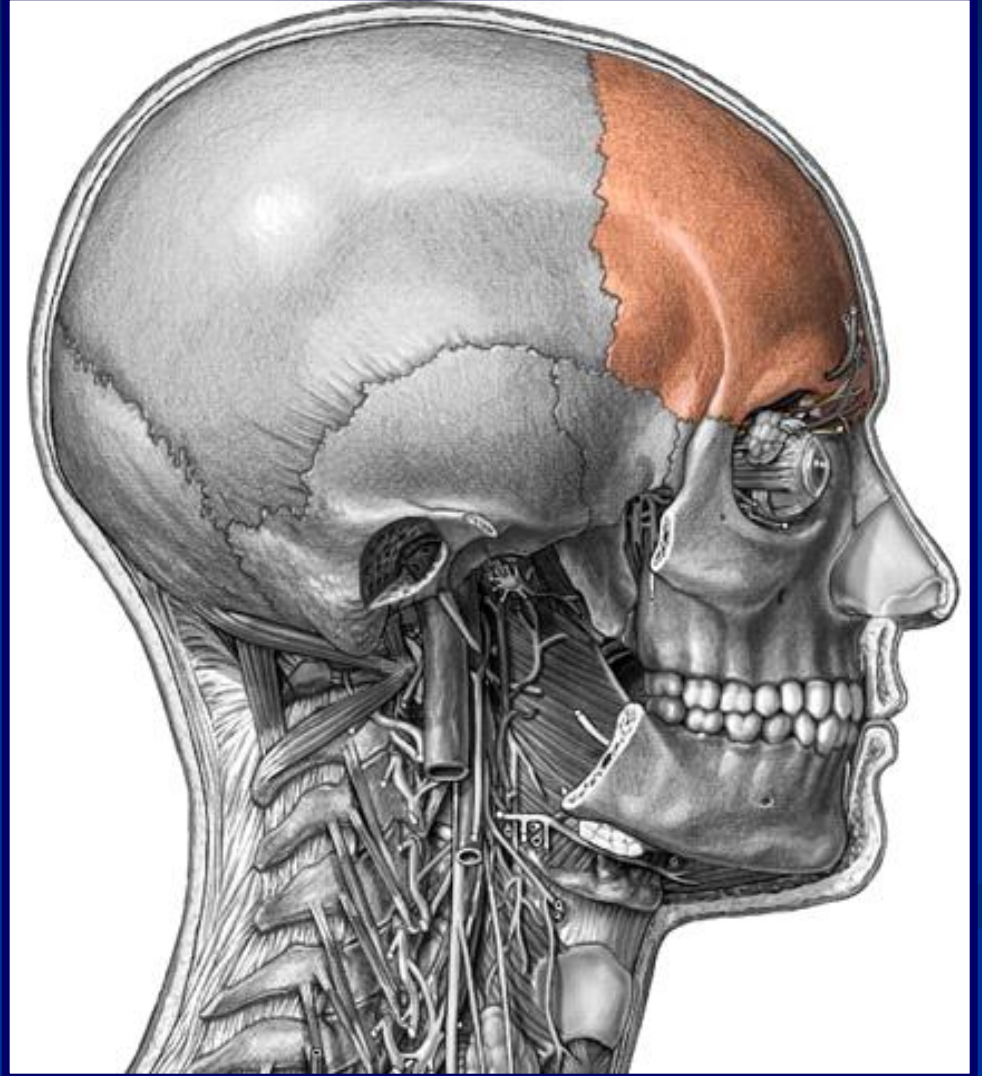
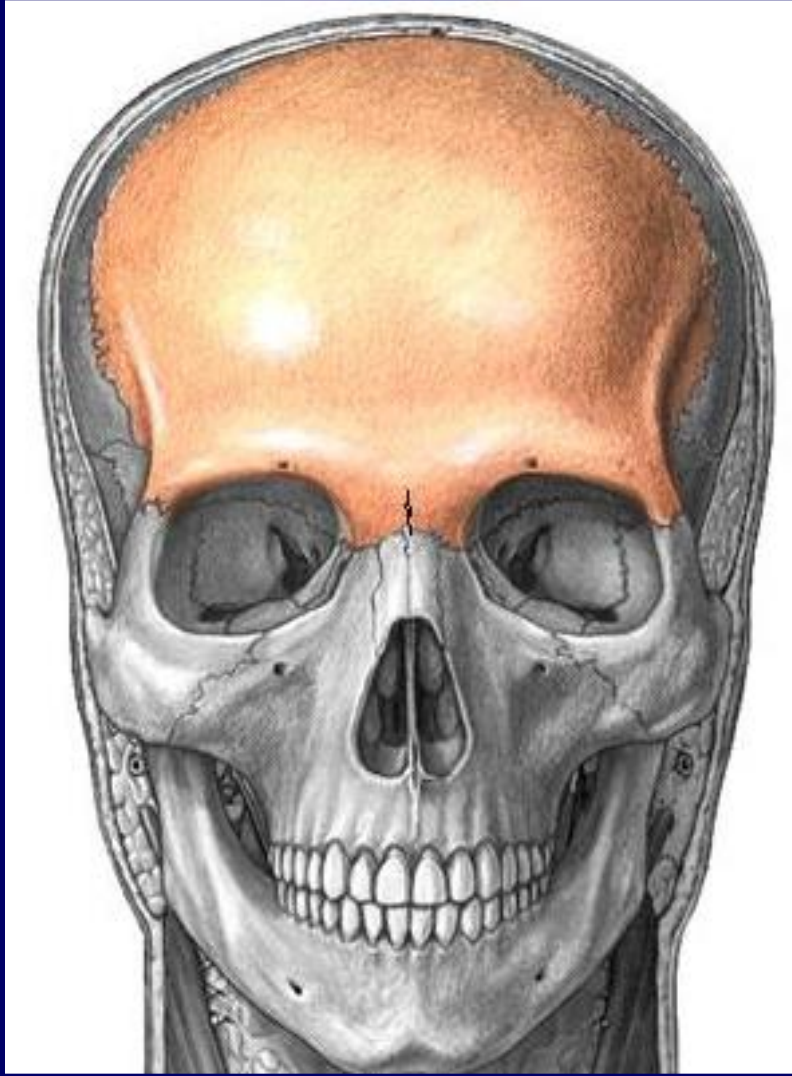
# HUESOS DEL CRANEO



*Profesor Marco Figueroa*

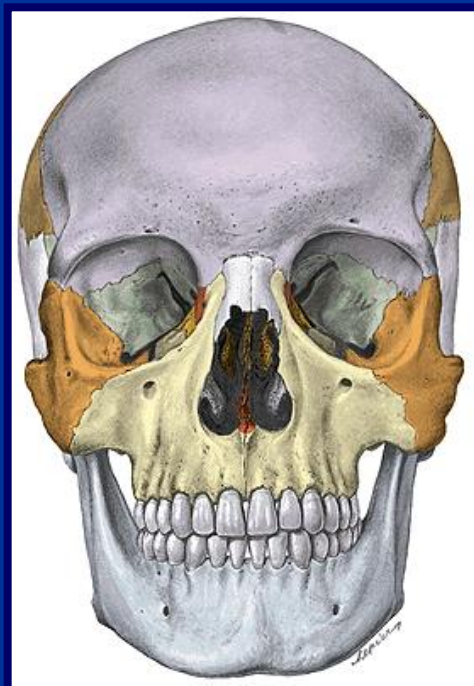
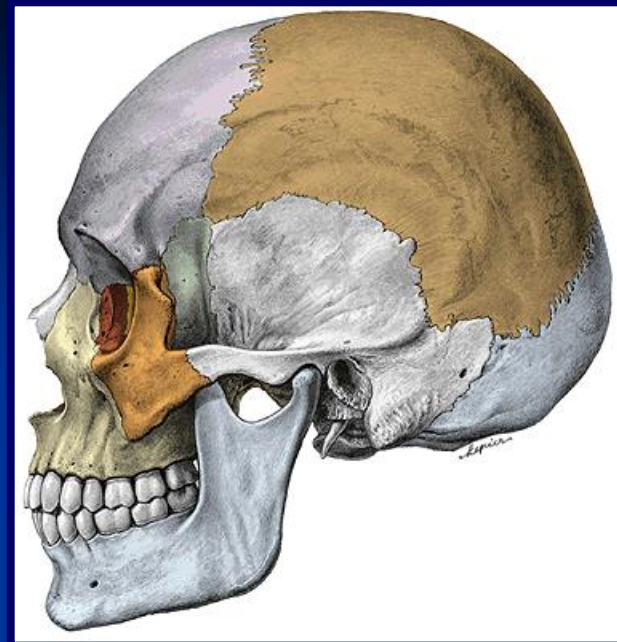
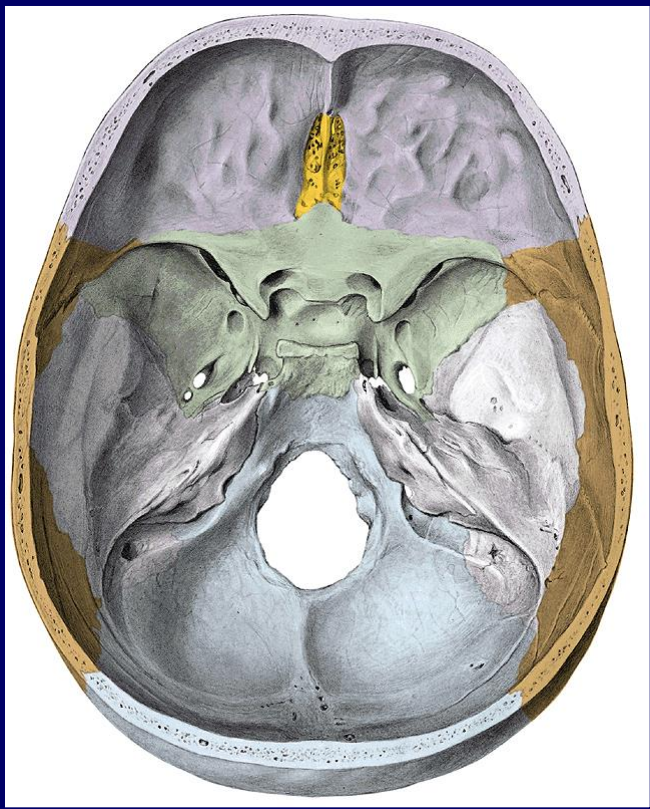


# FRONTAL





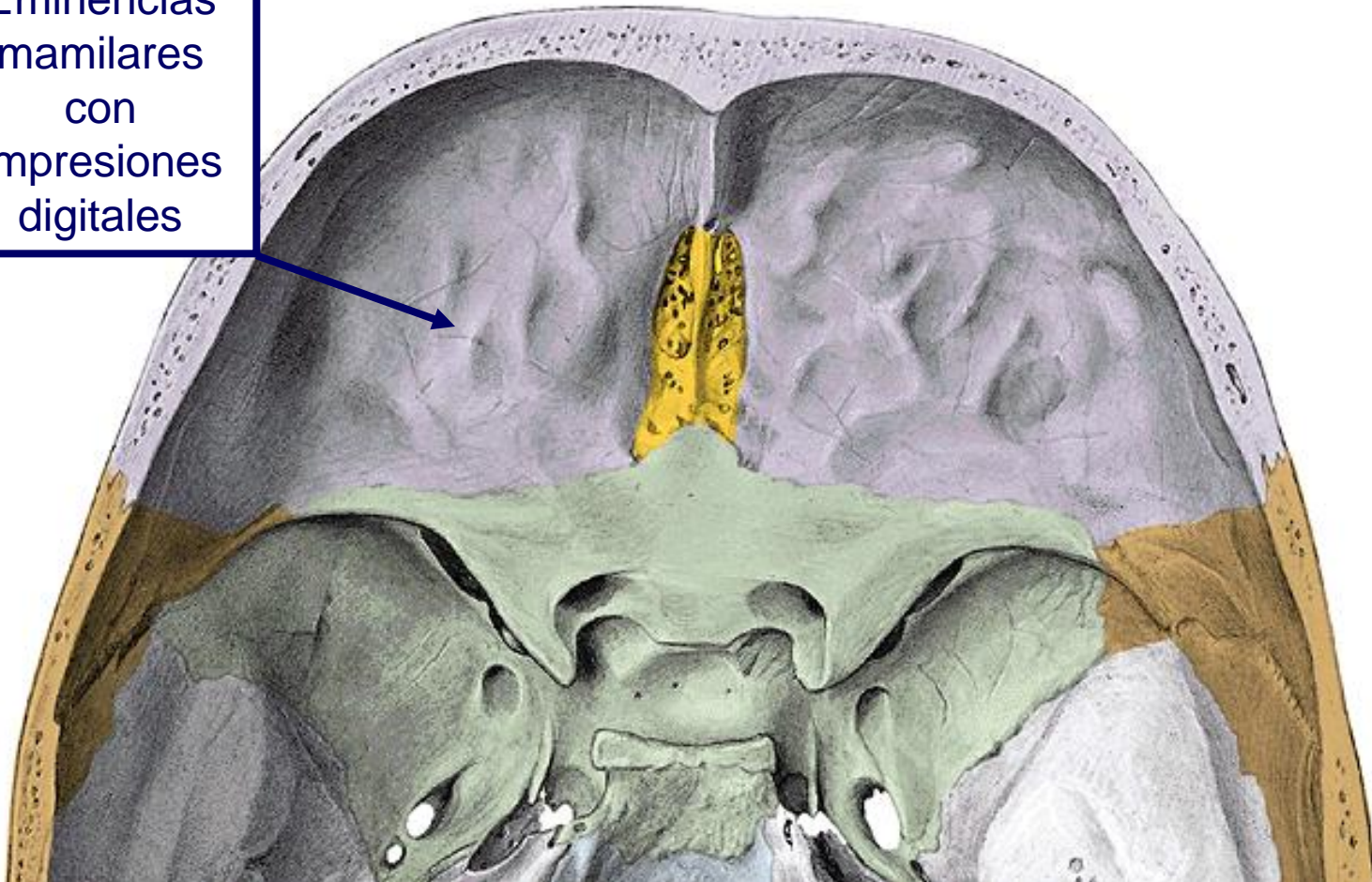
# Ubicación





# Cara Interna

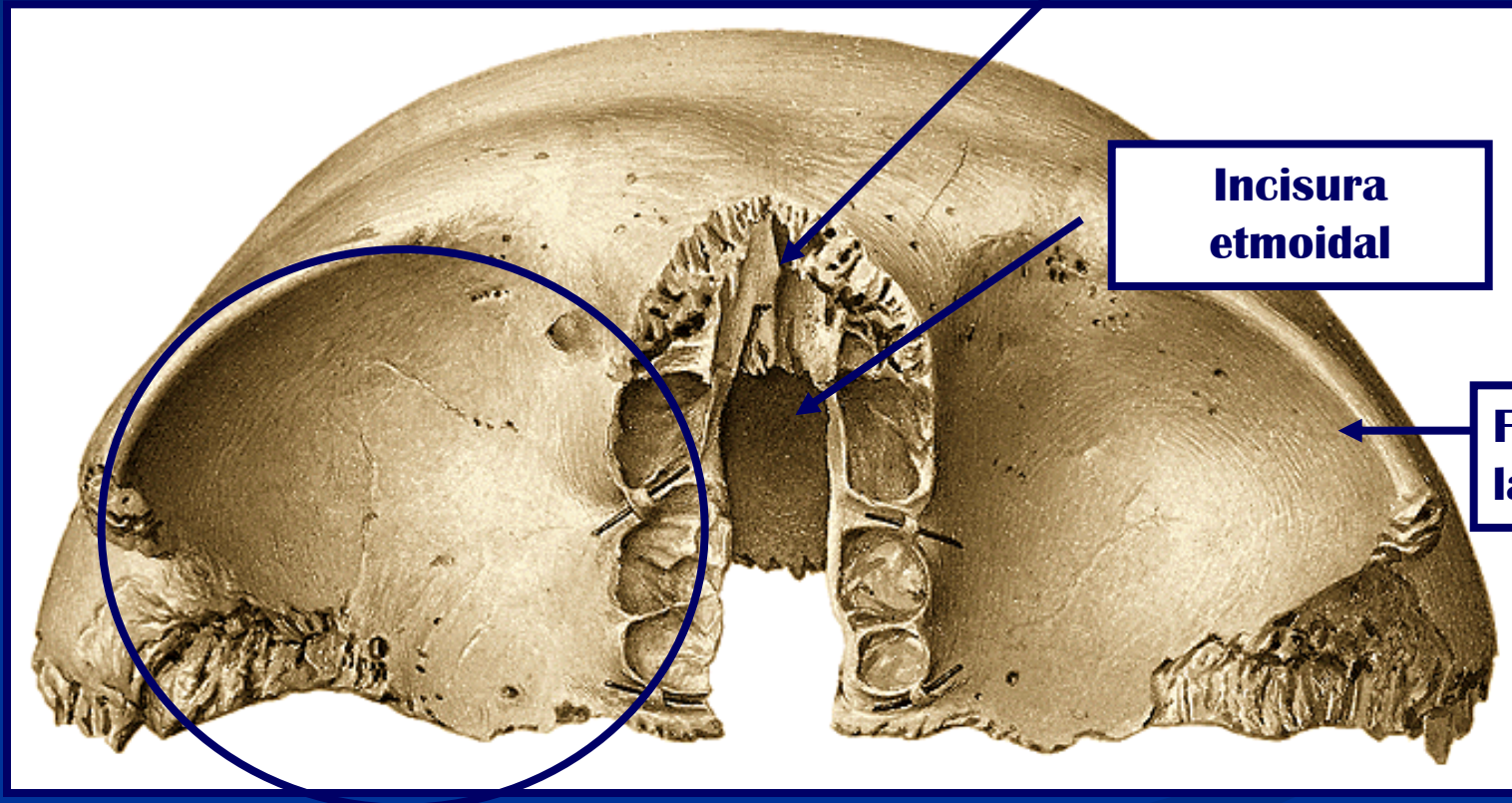
Eminencias  
mamilares  
con  
Impresiones  
digitales



Espina nasal — — Escotadura etmoidal



# Parte orbitaria (cara inferior)



Espina nasal

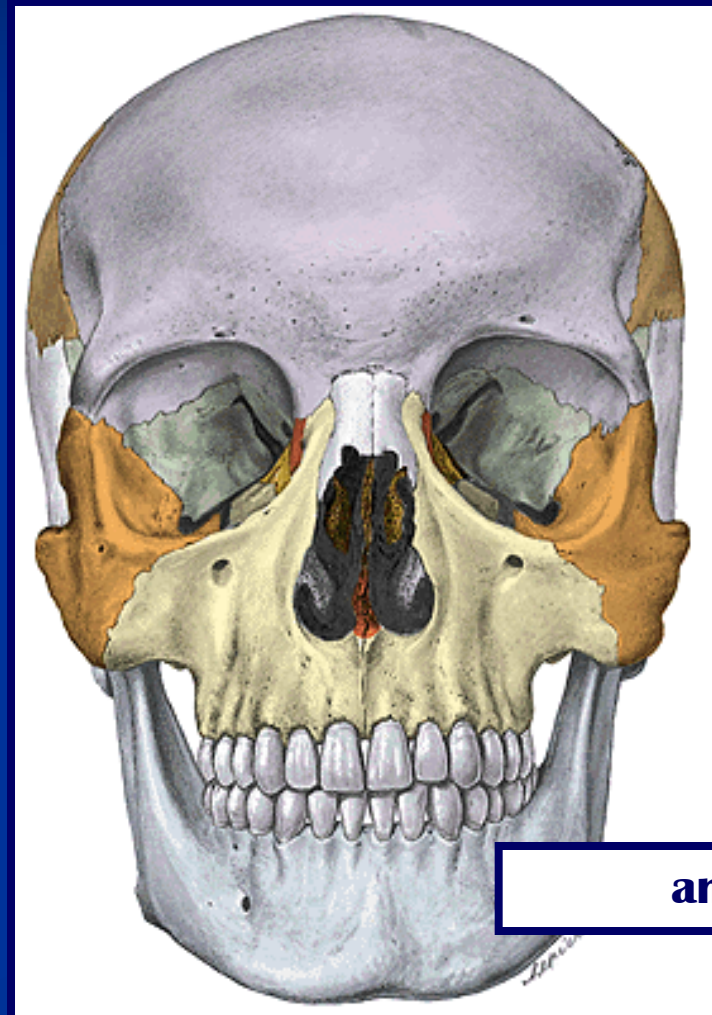
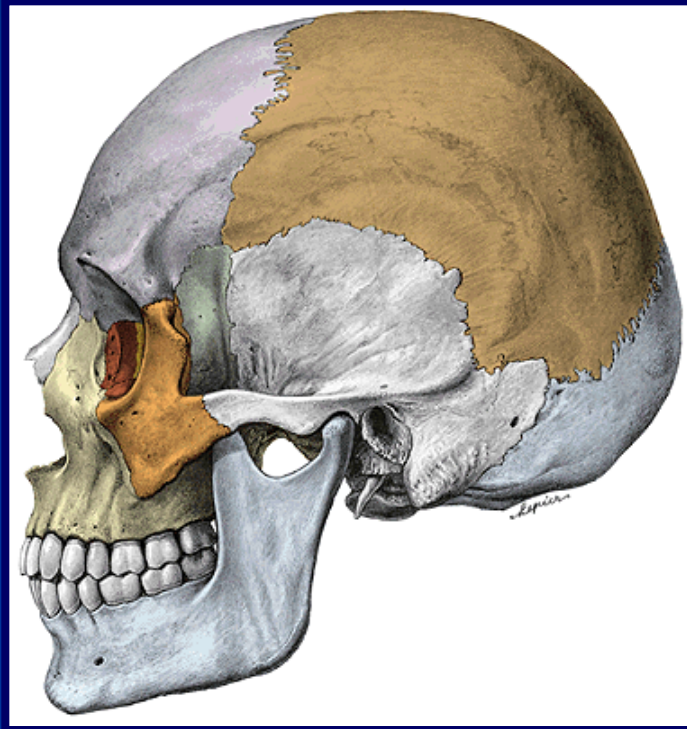
Incisura  
etmoidal

Fosa  
lagrimal

Pared superior de las  
cavidades orbitarias

# Márgenes

**superior**

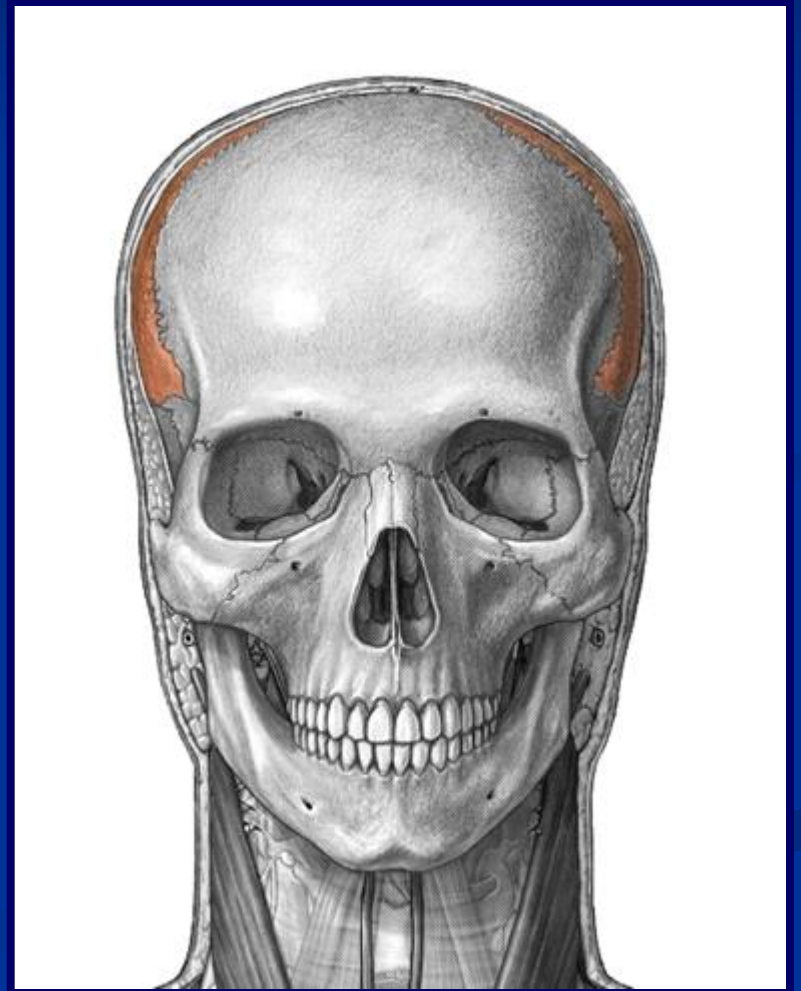
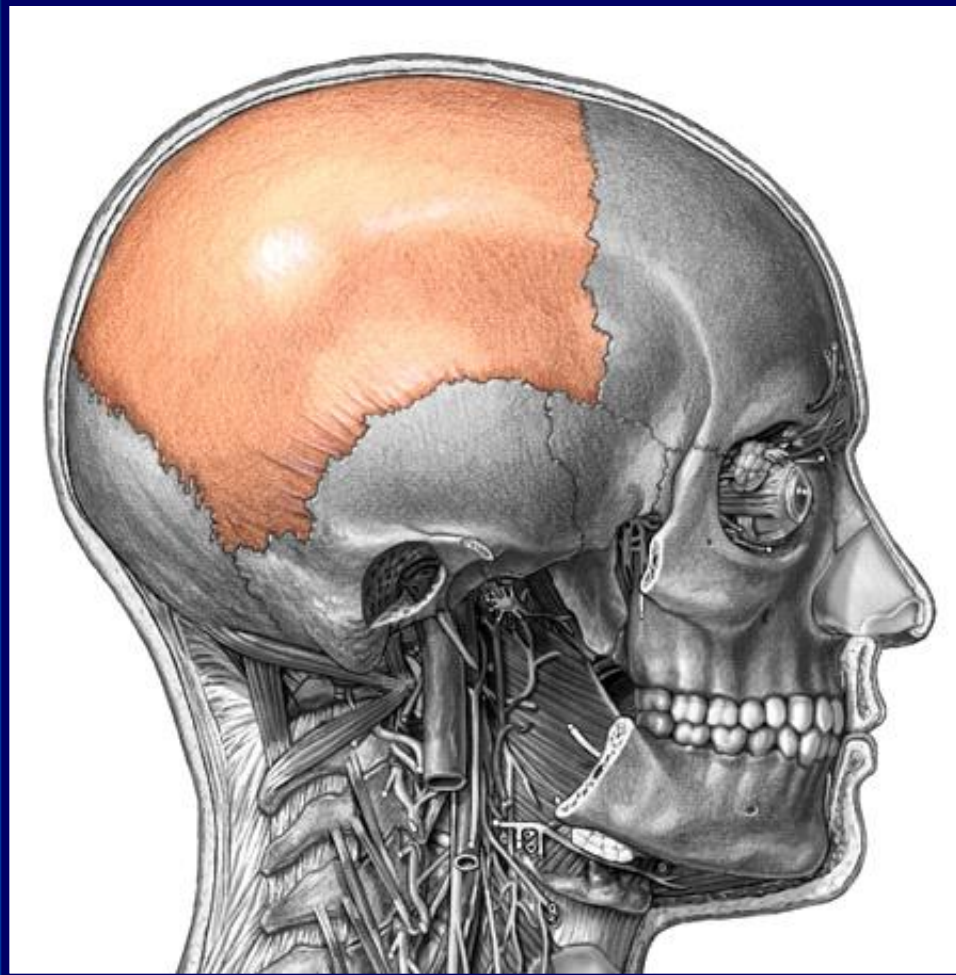


**or**

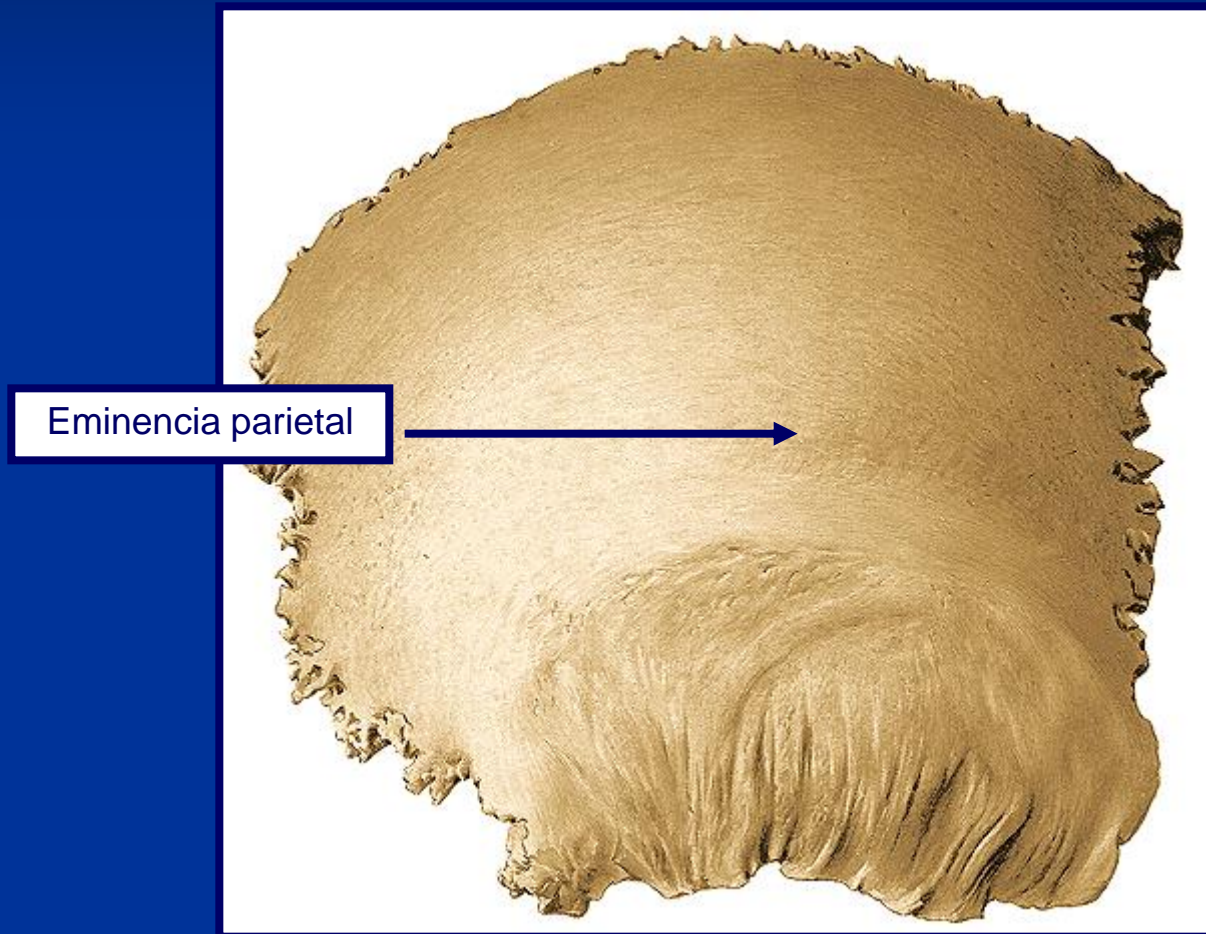
**anterior**

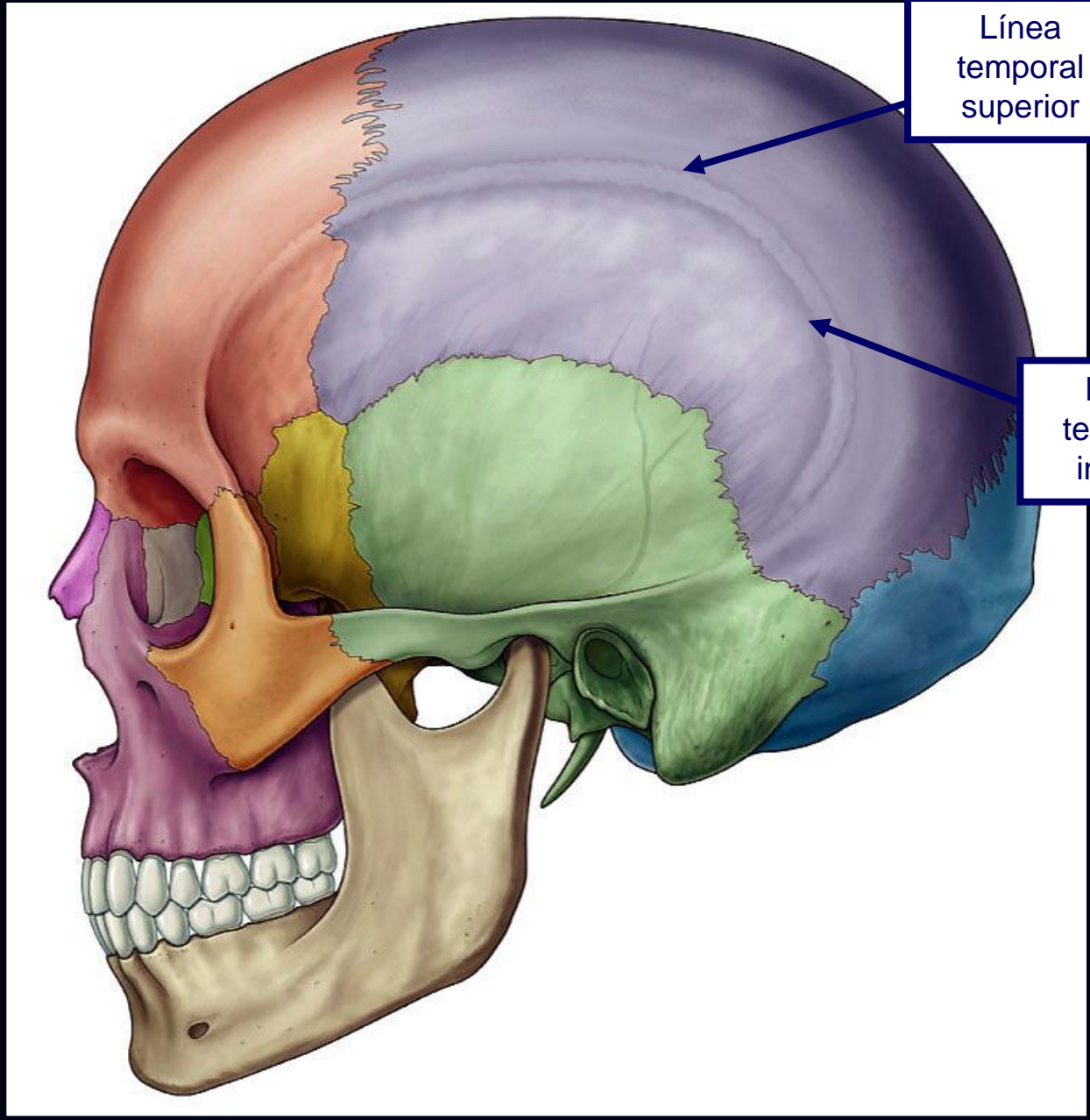


# PARIETAL



# Cara Externa



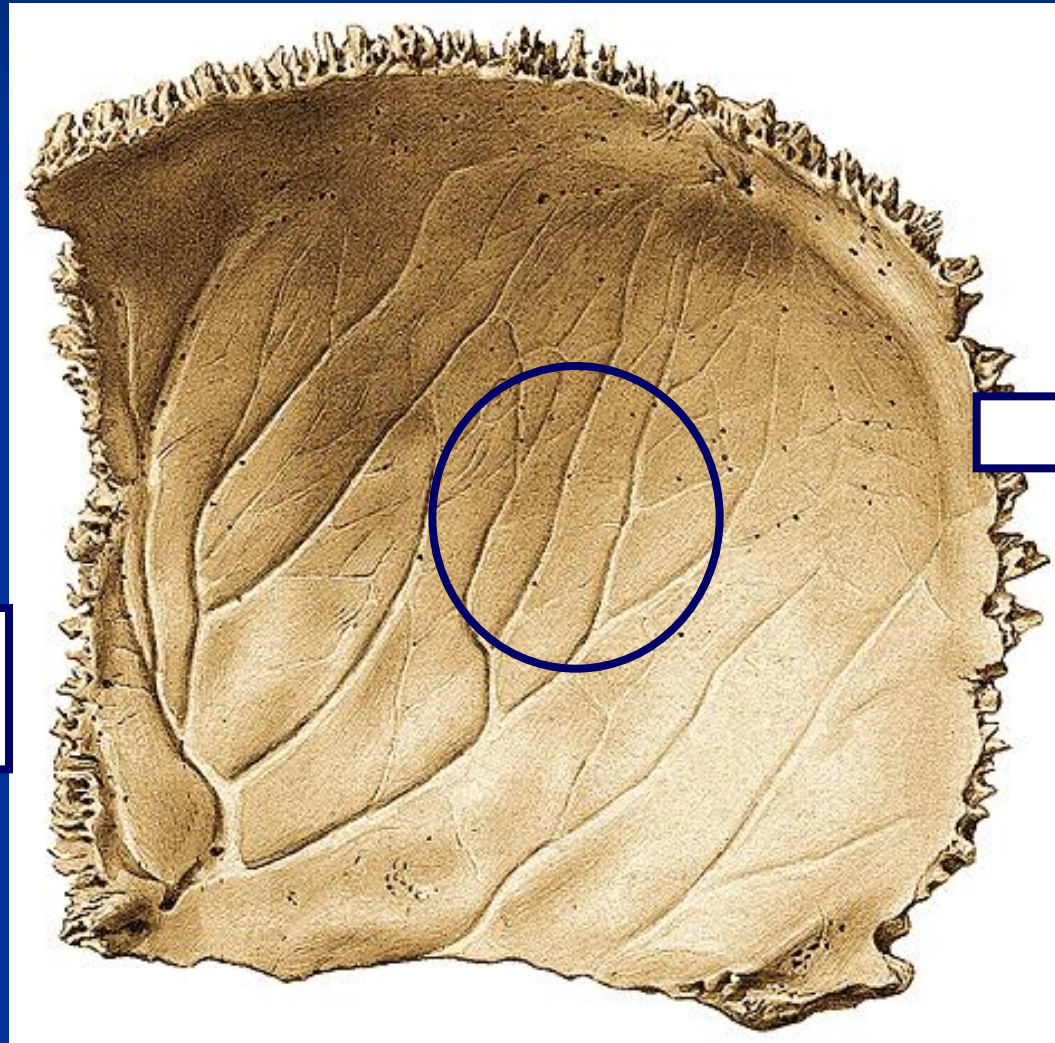


Línea temporal superior

Línea temporal inferior



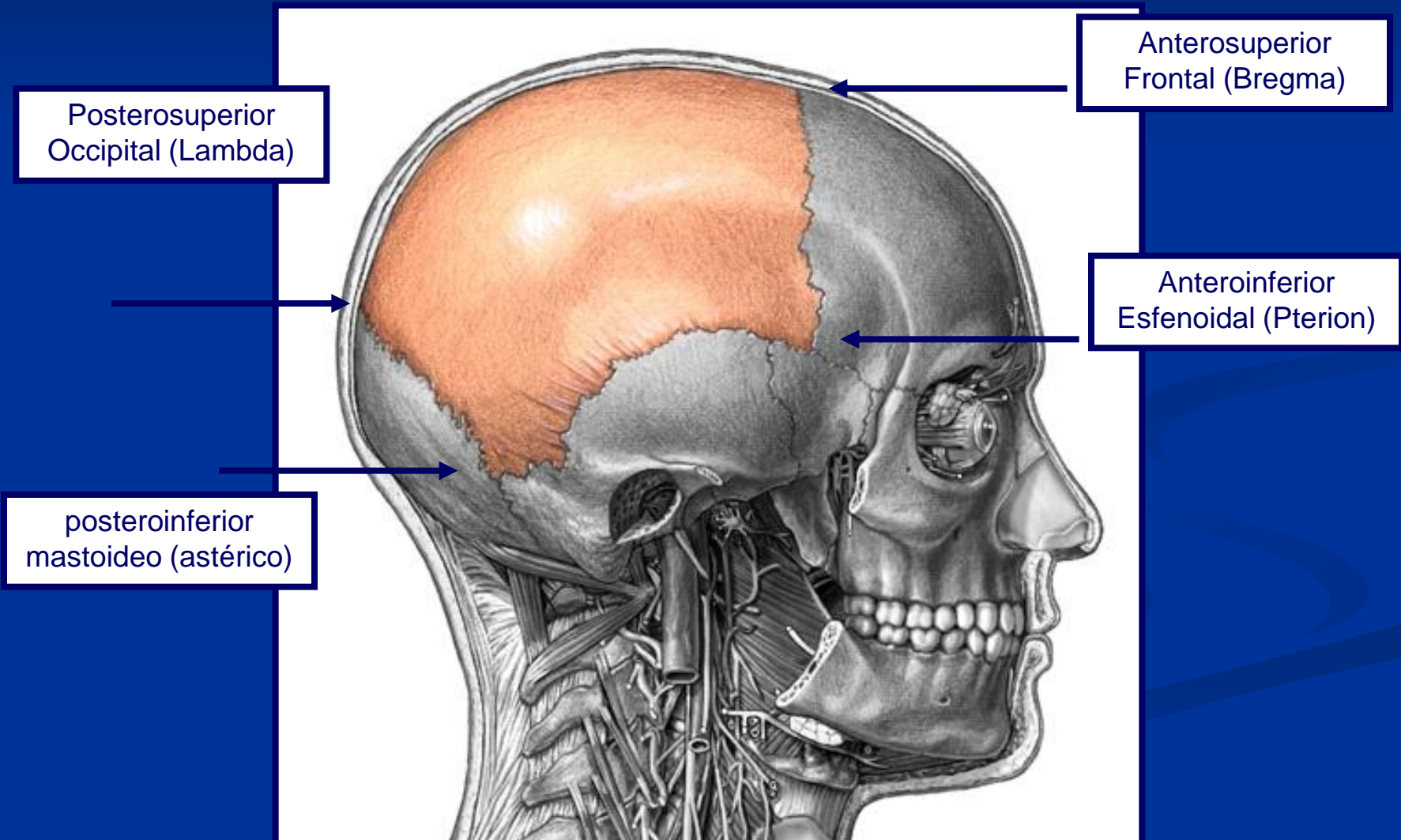
# Cara Interna



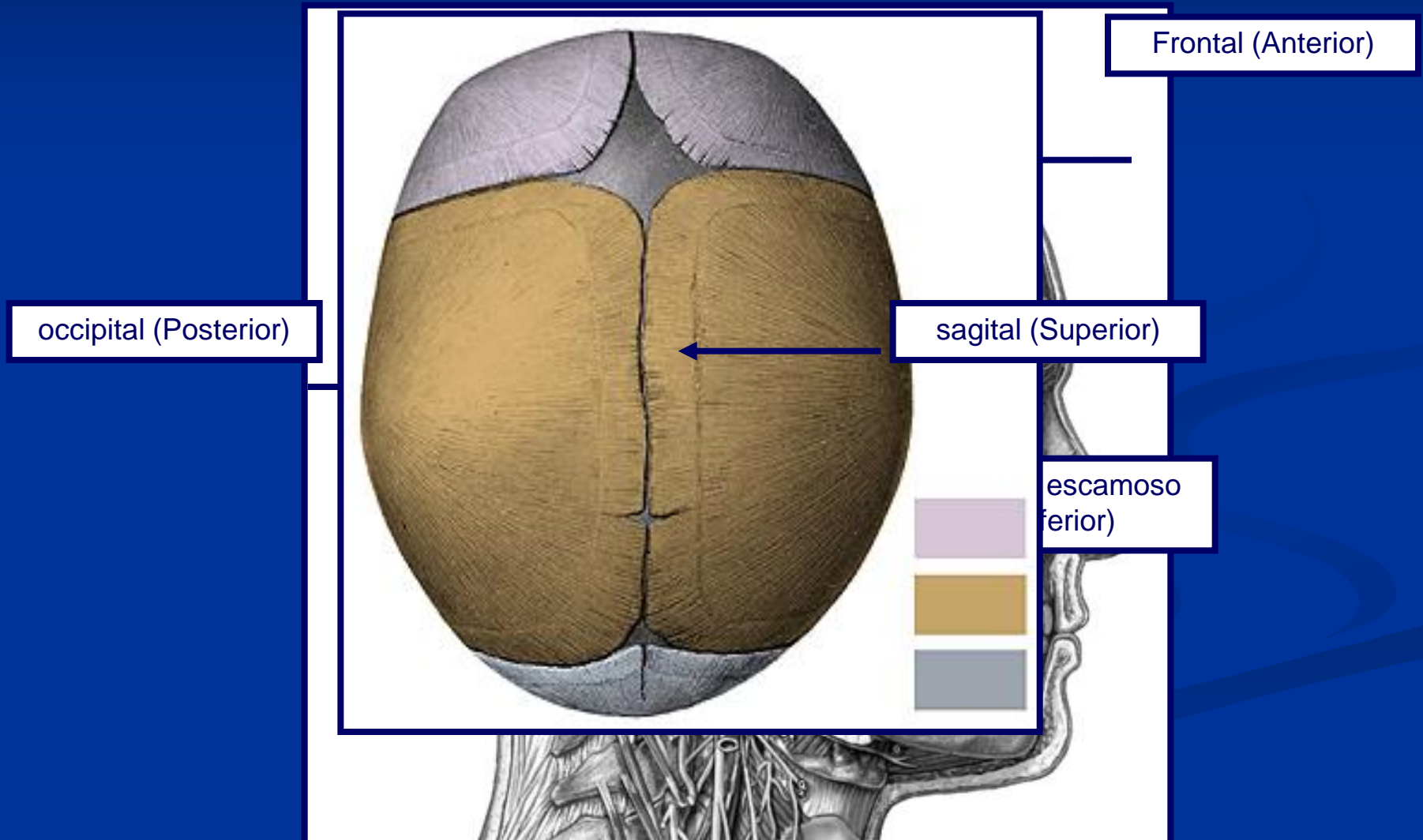
Hoja de Higuera  
(arteria meníngea  
media)

Fosa parietal

# Ángulos

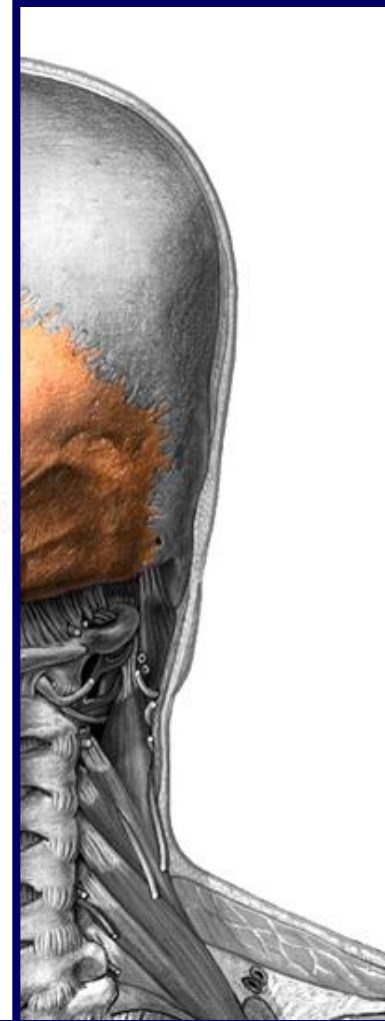


# Márgenes

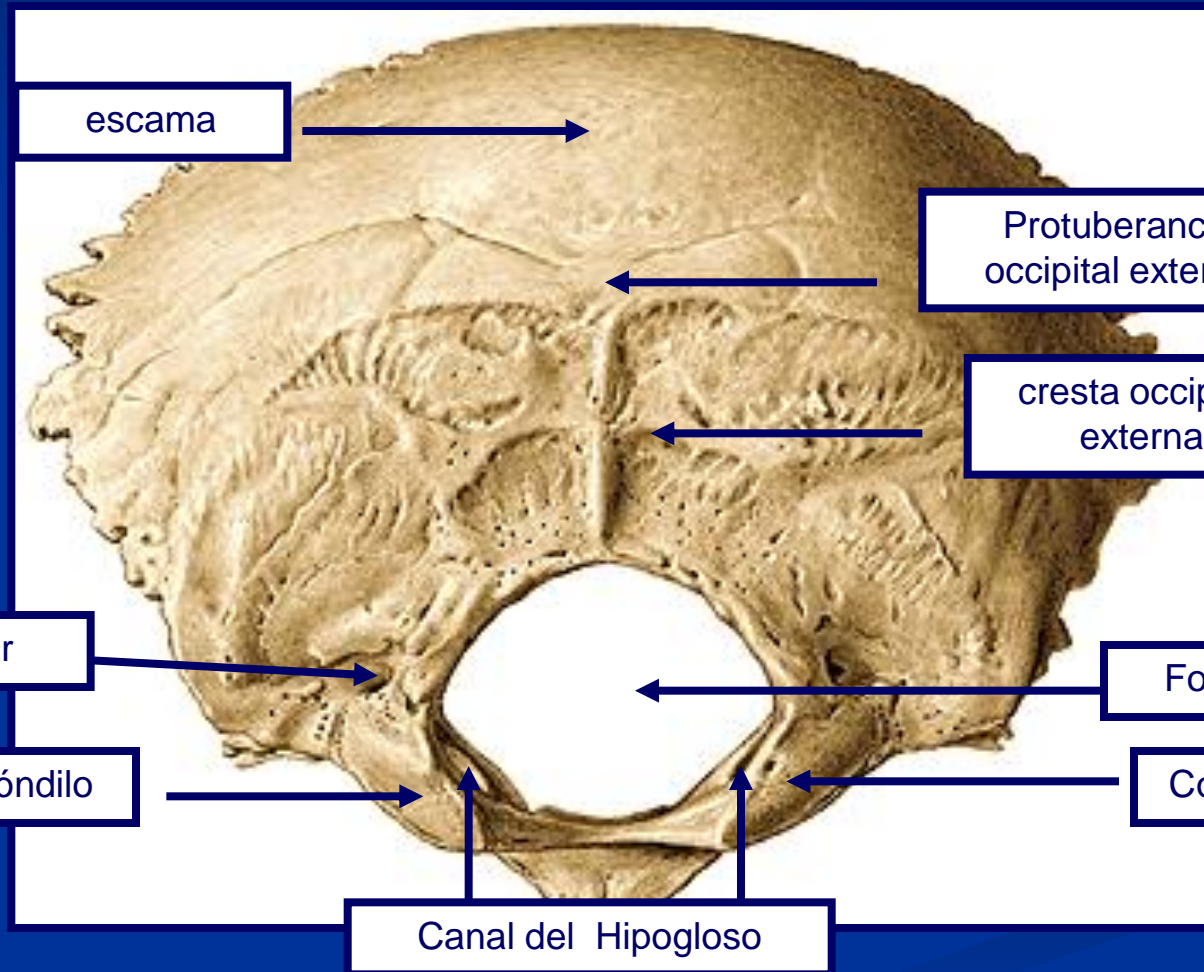




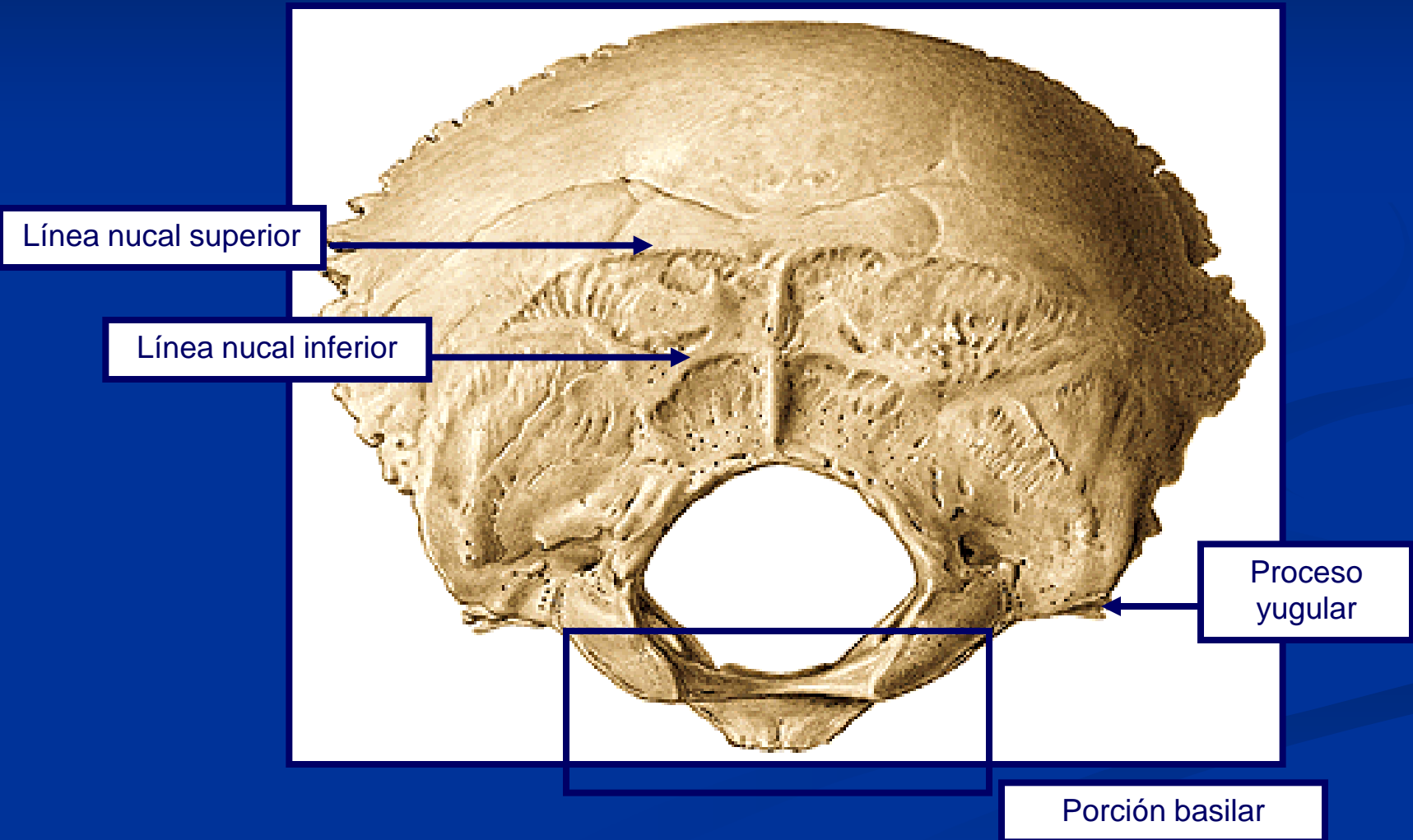
# OCCIPITAL



# Cara Posteroinferior



# Cara Posteroinferior





# Cara Anterosuperior

Fosas superiores cerebrales

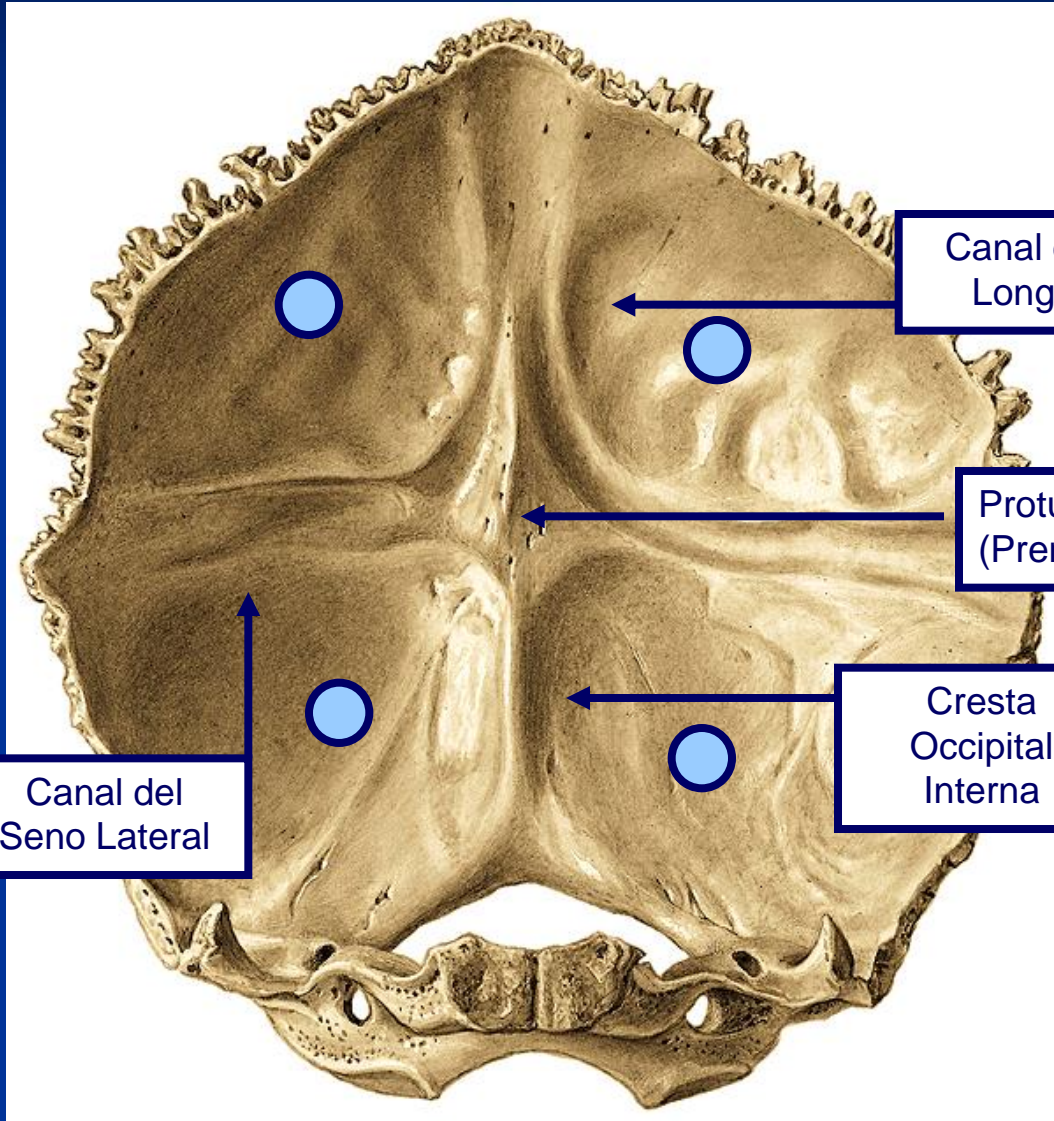
Canal del Seno Longitudinal

Protuberancia occipital interna (Prensa de Herofilo)

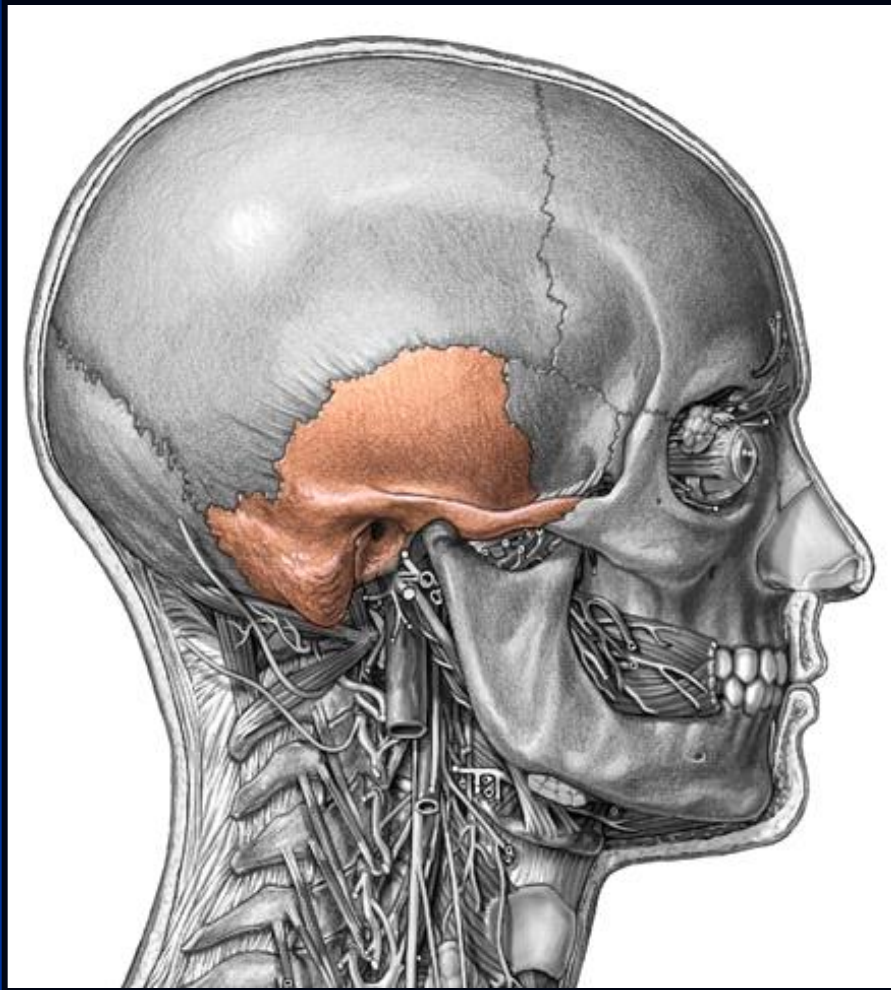
Cresta Occipital Interna

Canal del Seno Lateral

Fosas inferiores cerebelosas

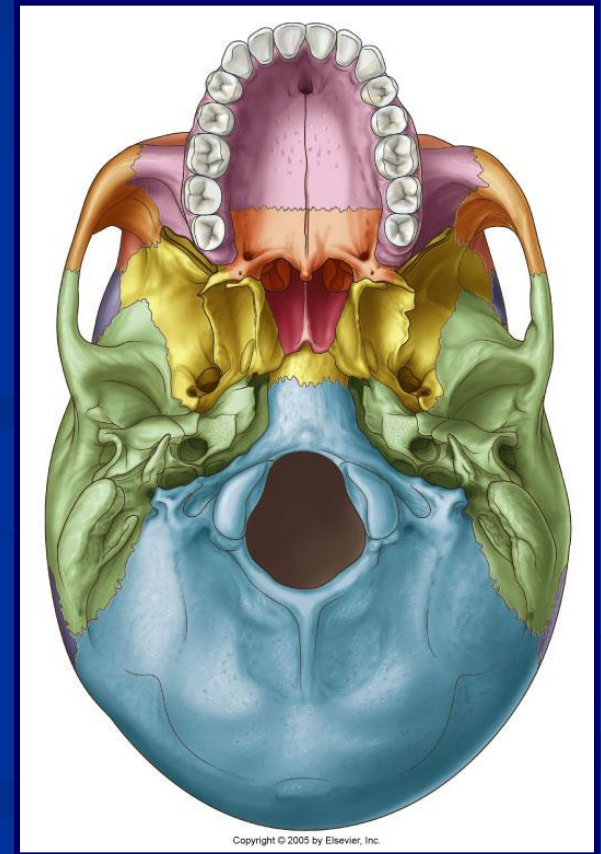
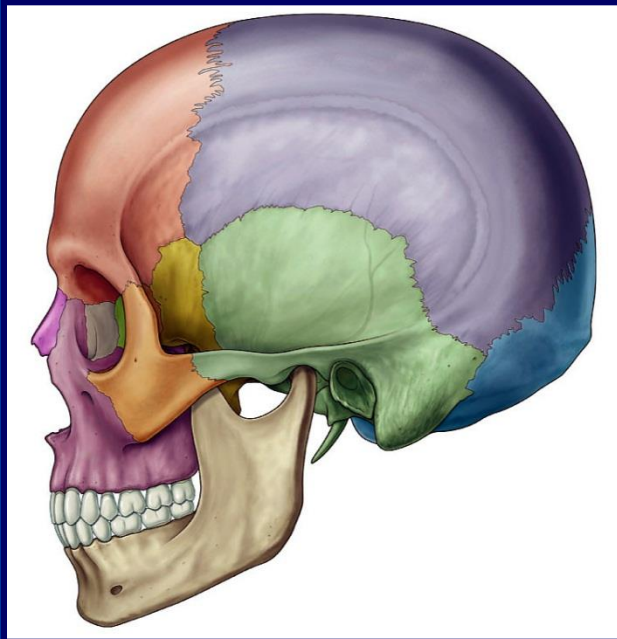
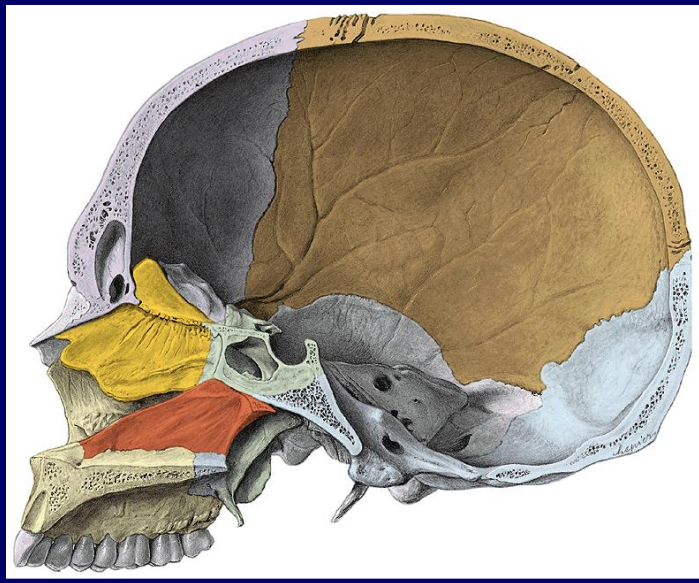


# TEMPORAL



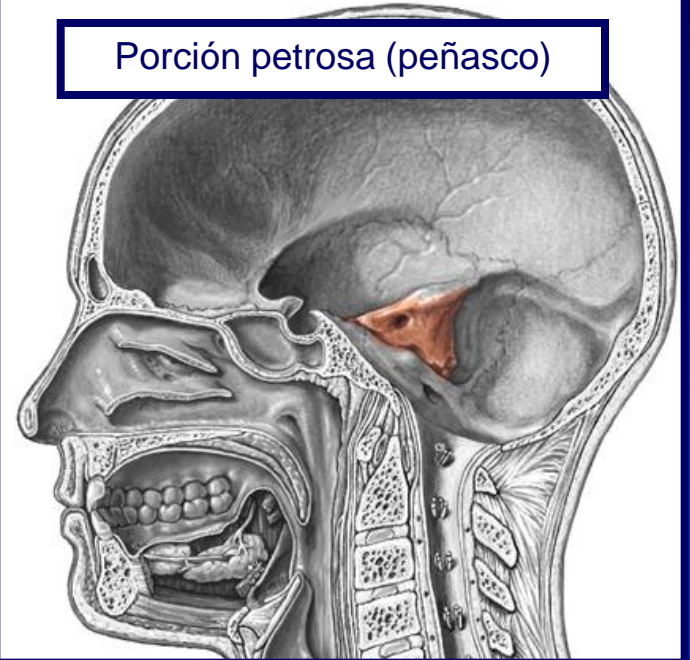


# Ubicación

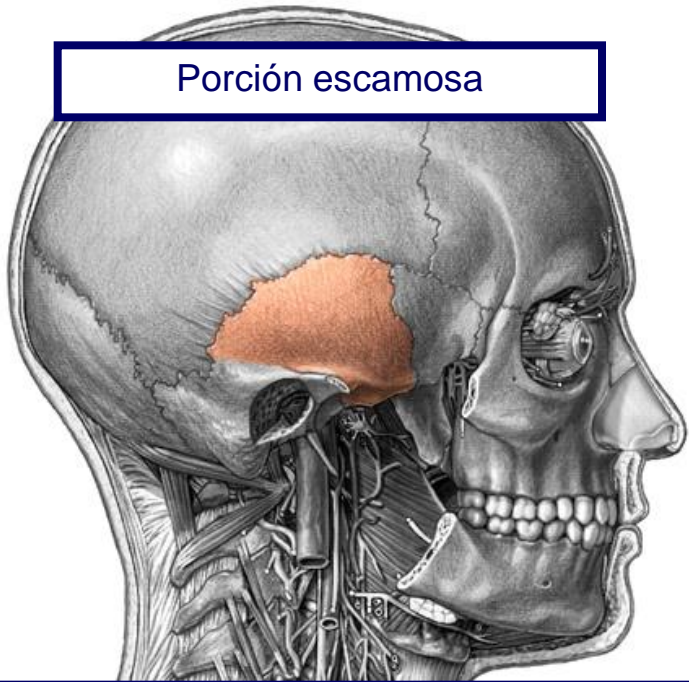




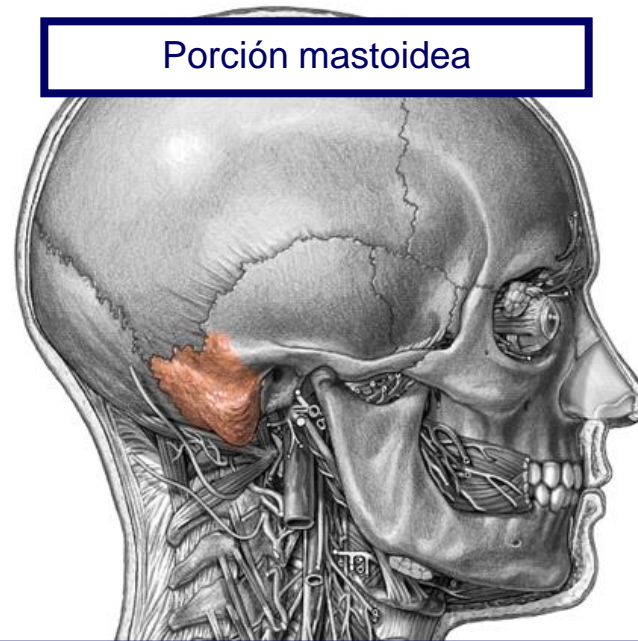
Porción petrosa (peñasco)



Porción escamosa

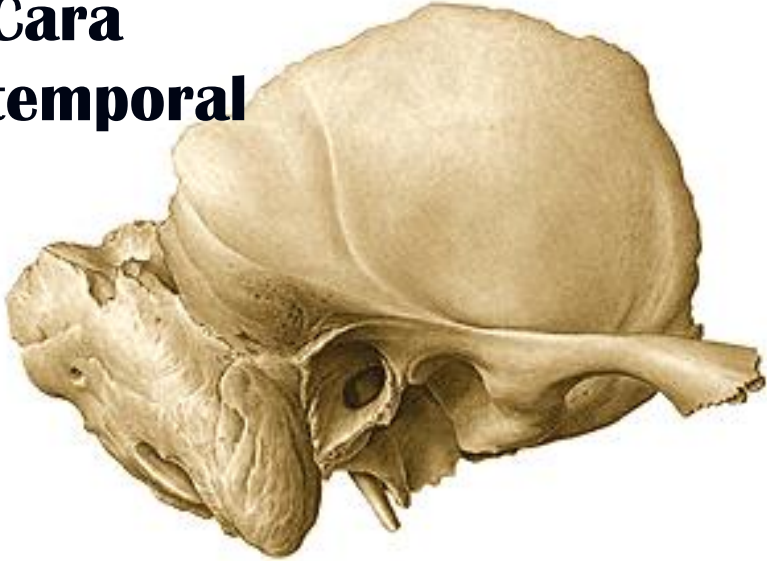


Porción mastoidea

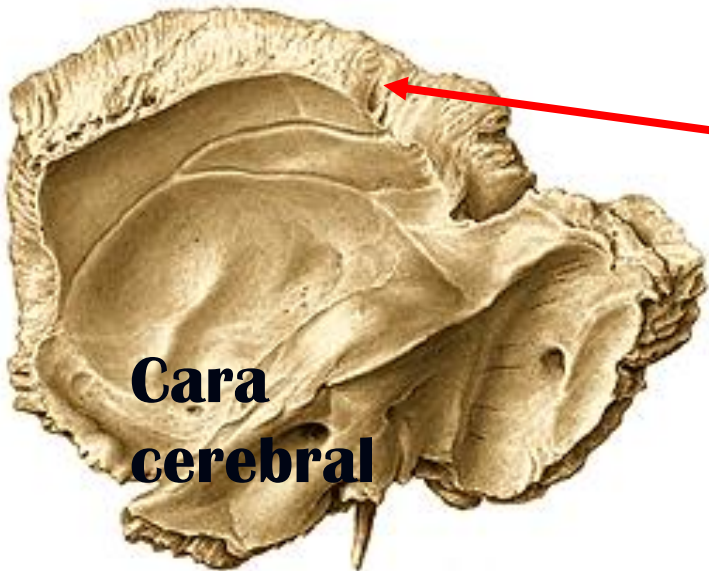


# Porción Escamosa

**Cara  
temporal**



**Contorno**

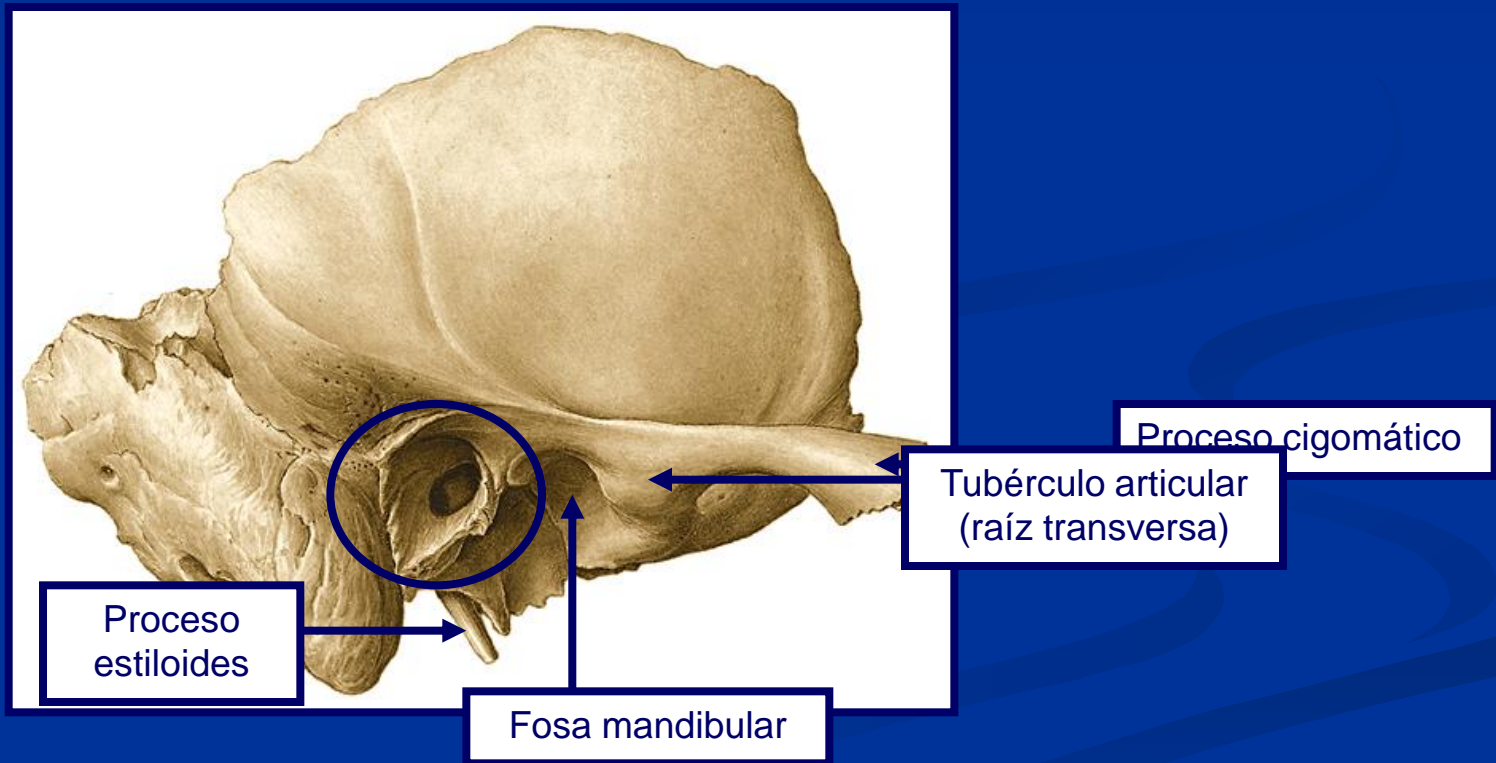


**Cara  
cerebral**



# Porción Escamosa

Cara  
temporal



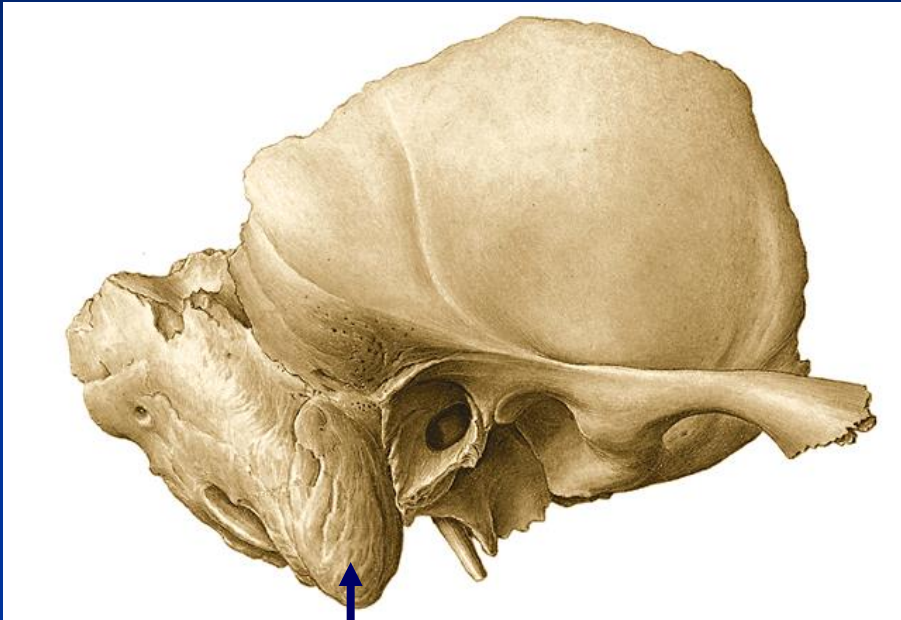


# Porción Escamosa

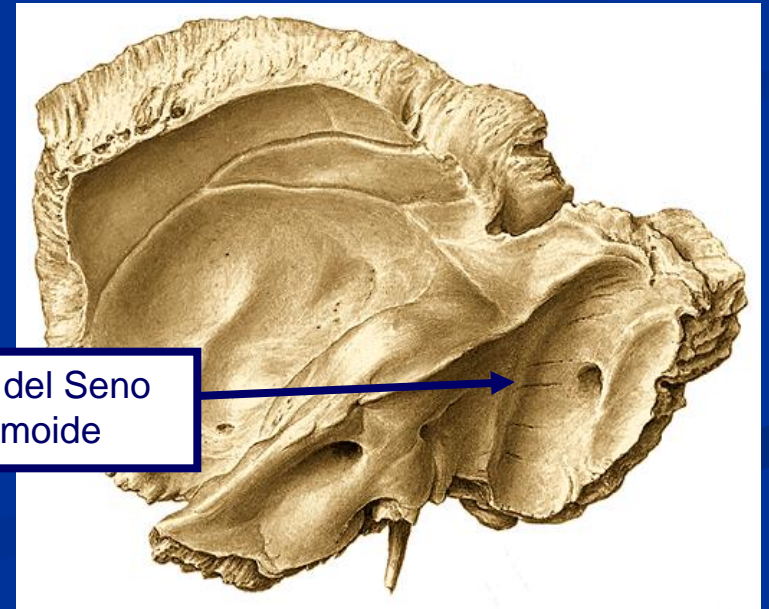
**Cara  
cerebral**



# Porción Mastoidea



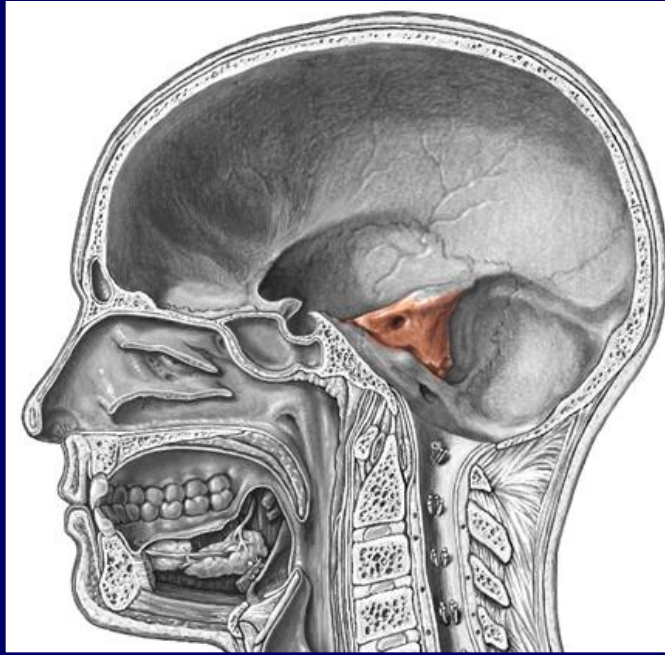
Proceso mastoideo



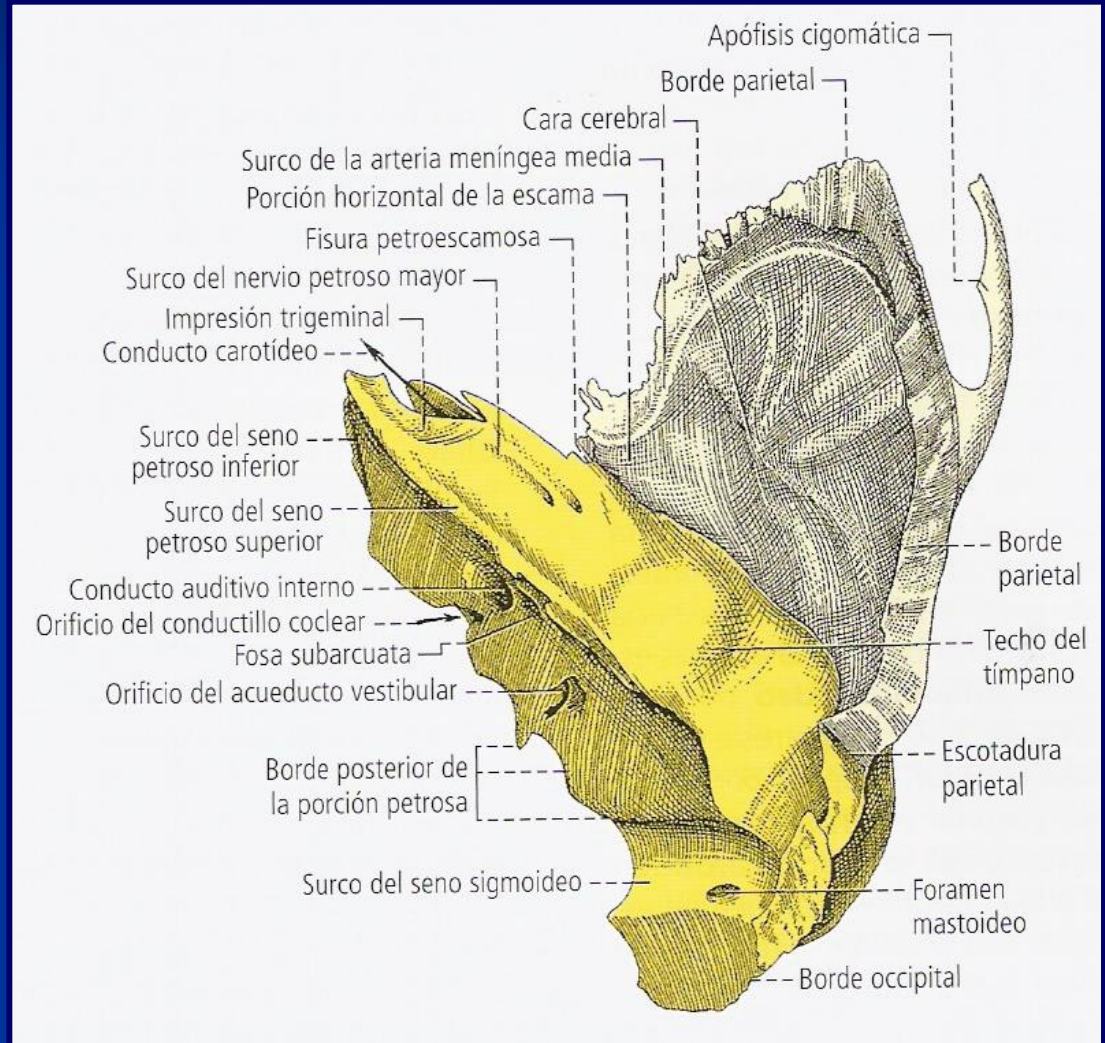
Surco del Seno Sigmoide



# Porción Petrosa (Peñasco)

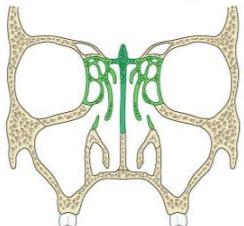
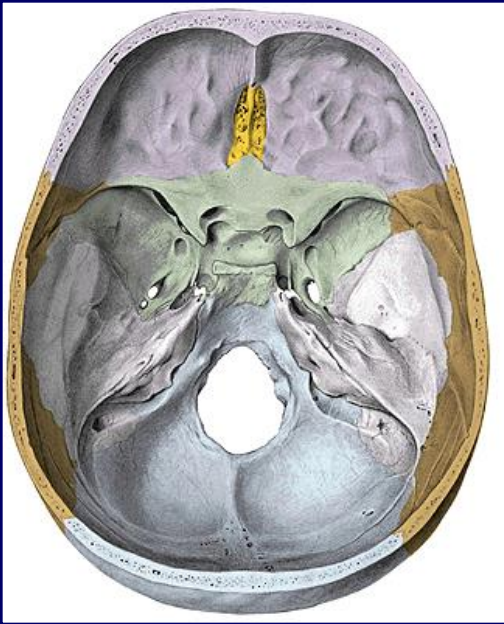


## Caras anterior y posterior





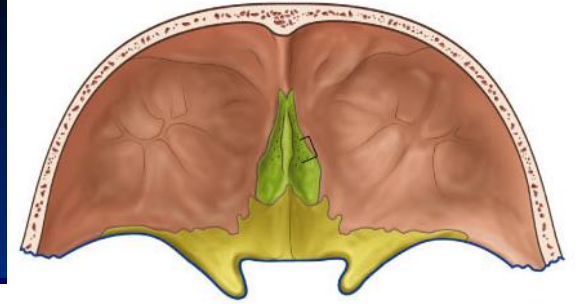
# ETMOIDES



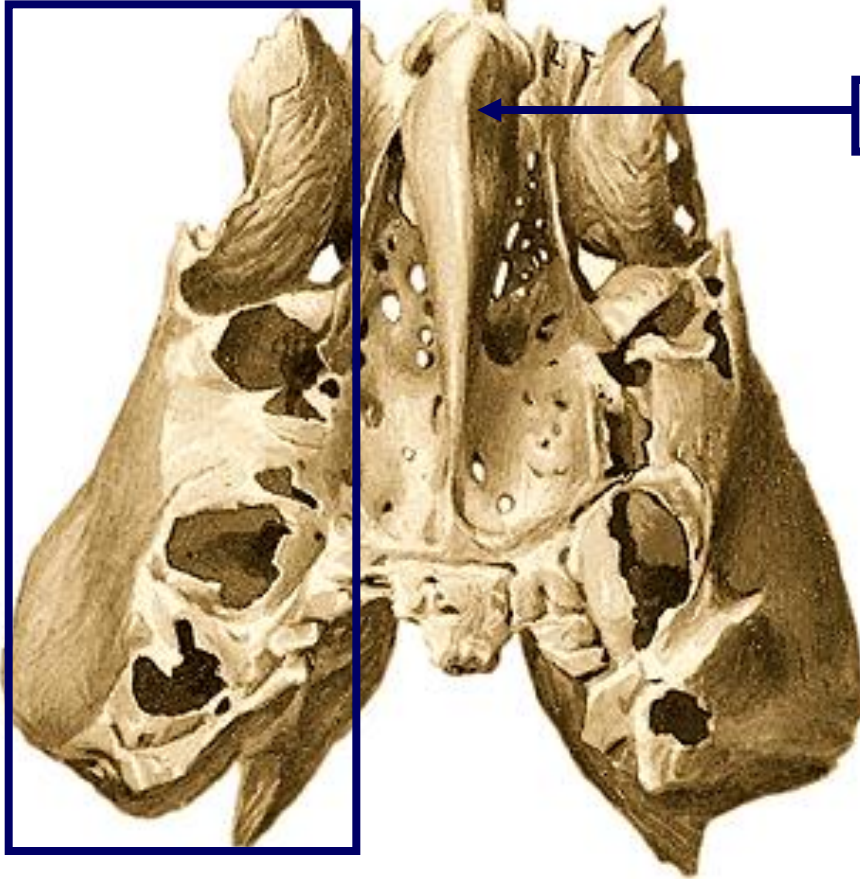
Copyright © 2005 by Elsevier, Inc.



# Cara superior



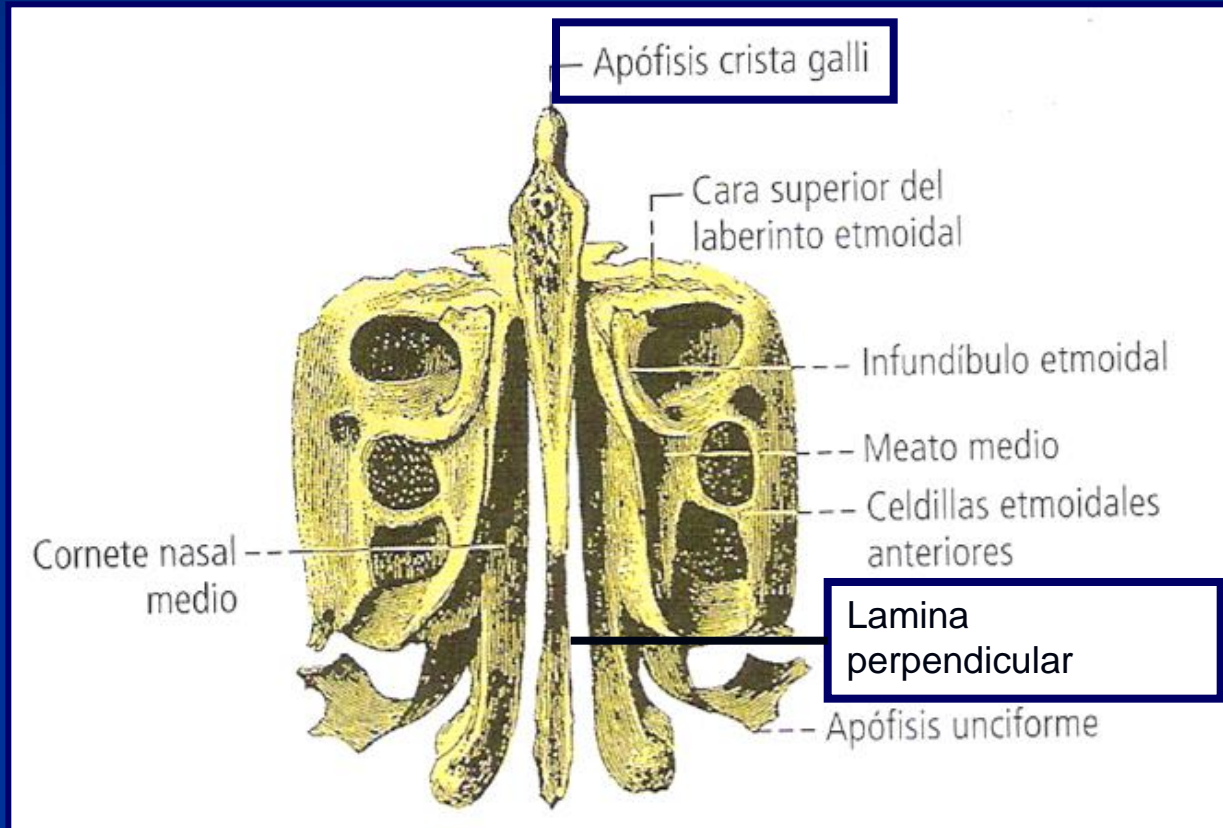
Laberintos  
estmoidales  
(masas laterales)



Proceso crista galli

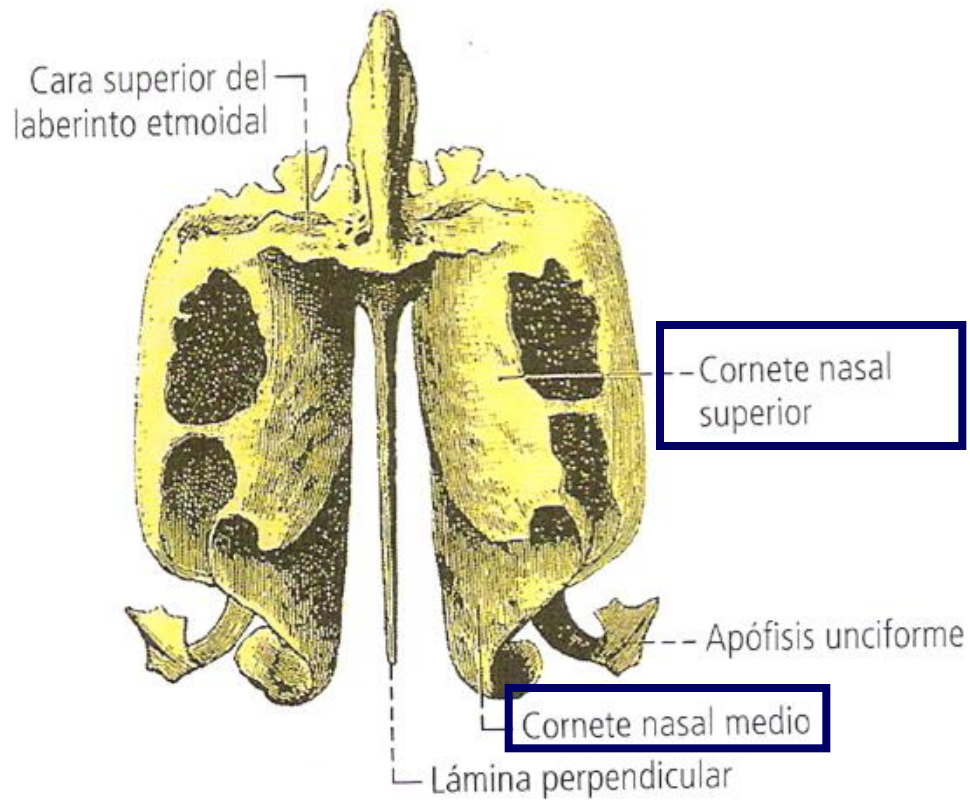


# Cara anterior

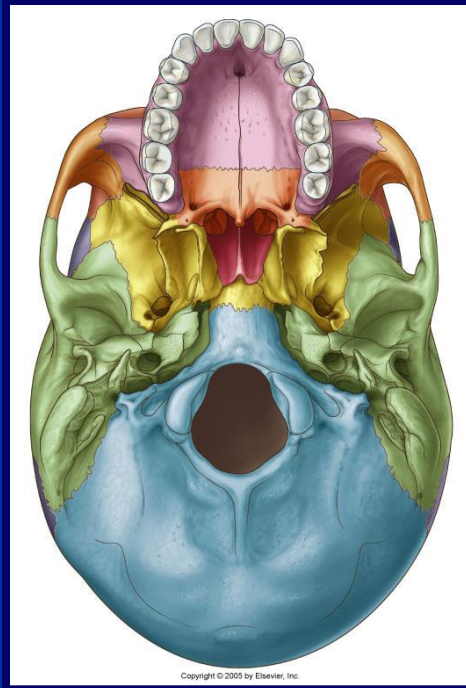
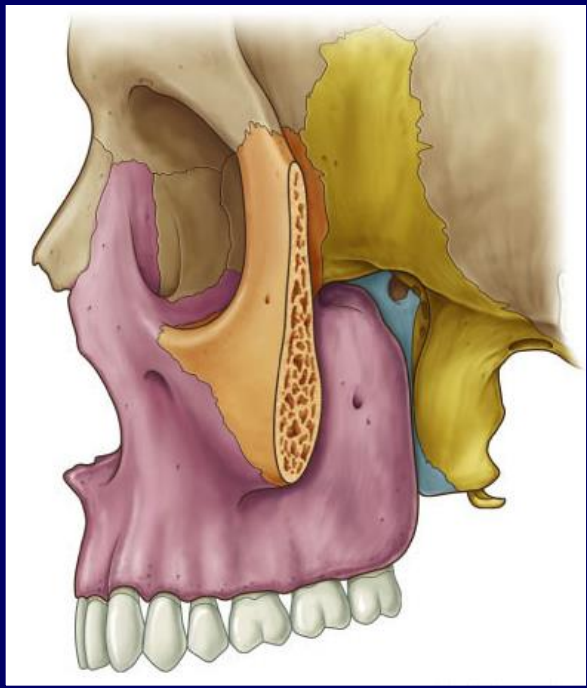
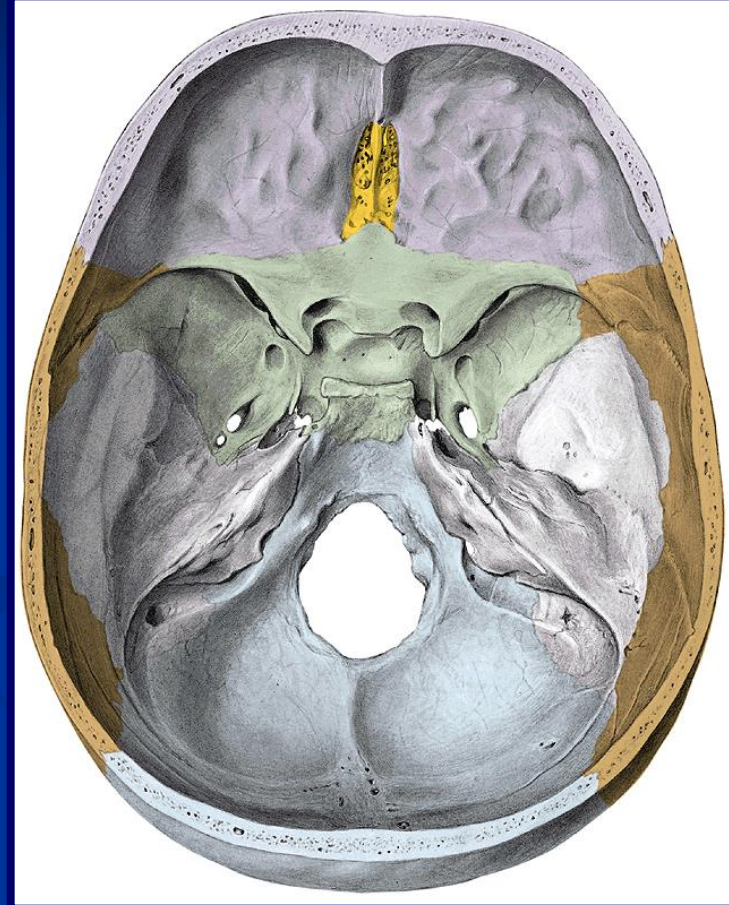
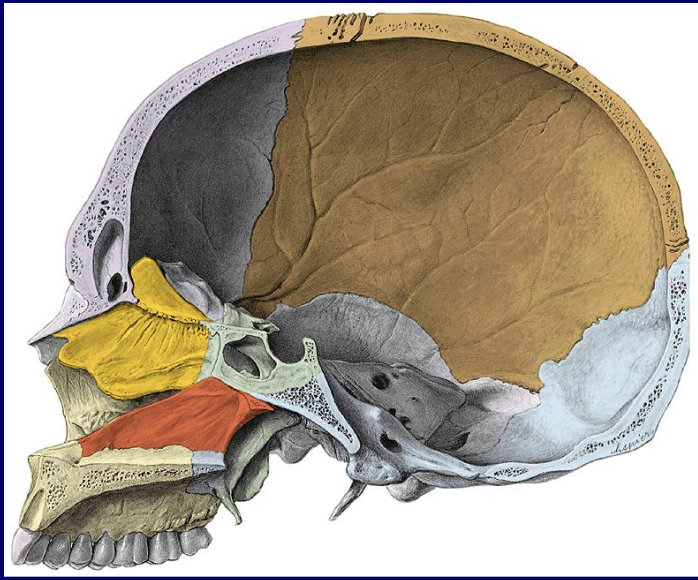




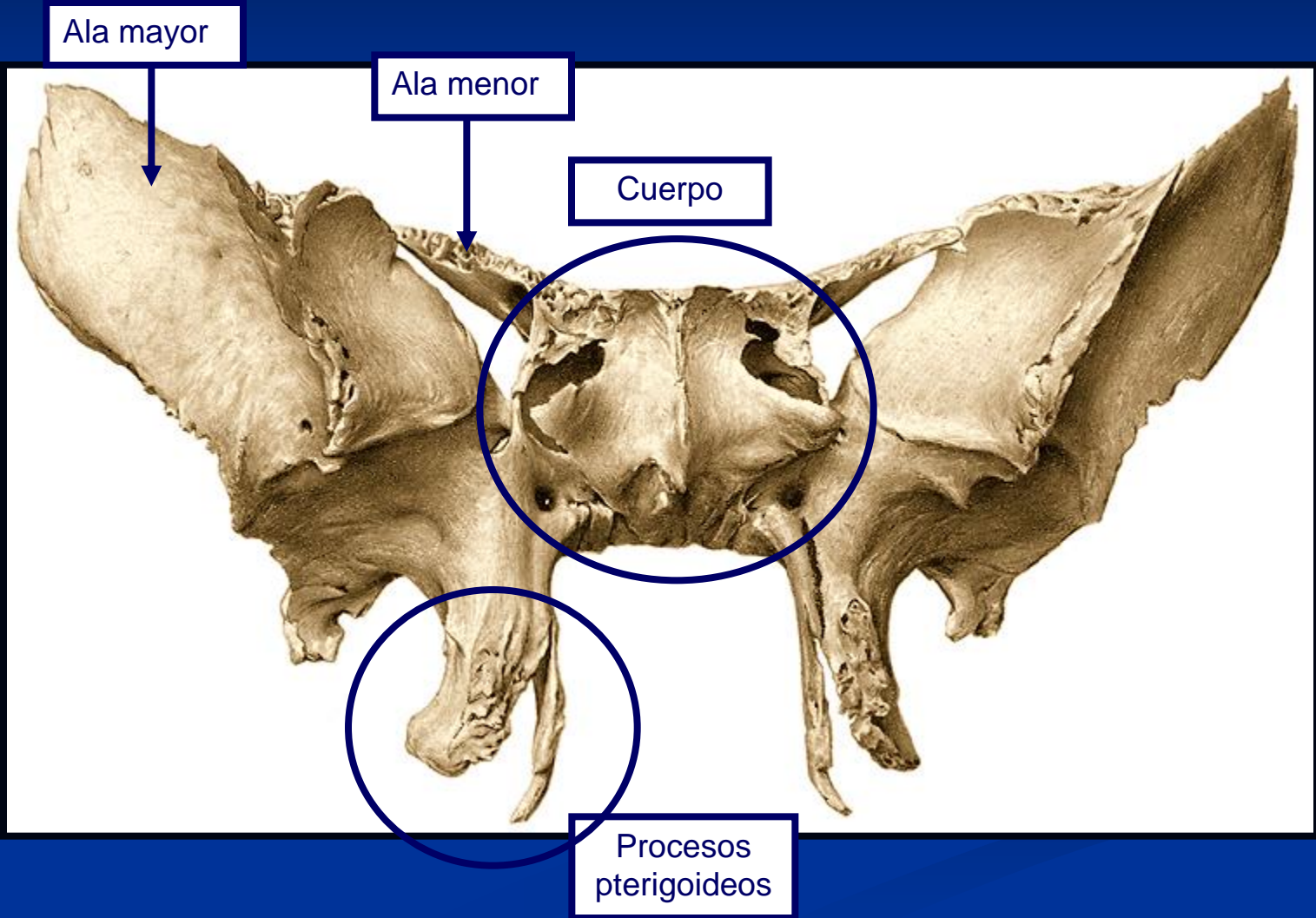
# Cara posterior



# ESFENOIDES

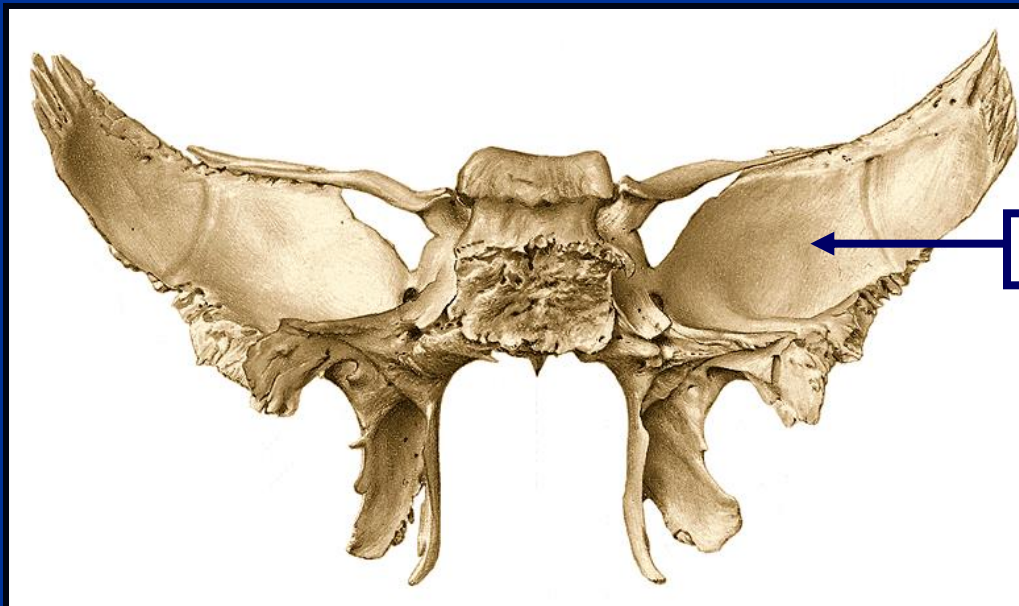
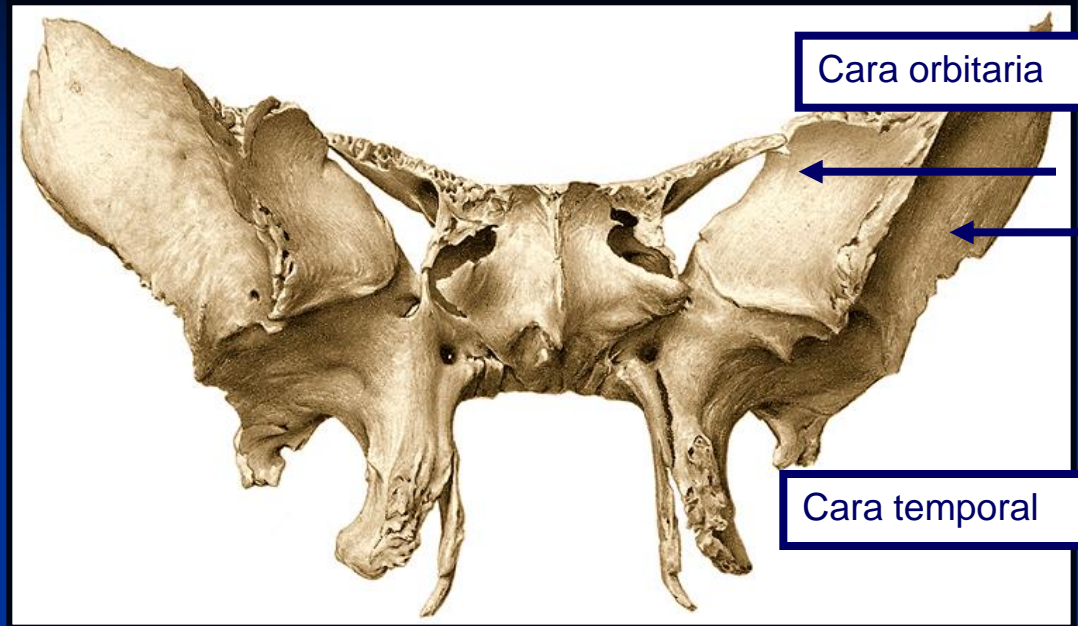


# Cara anterior





# Ala mayor

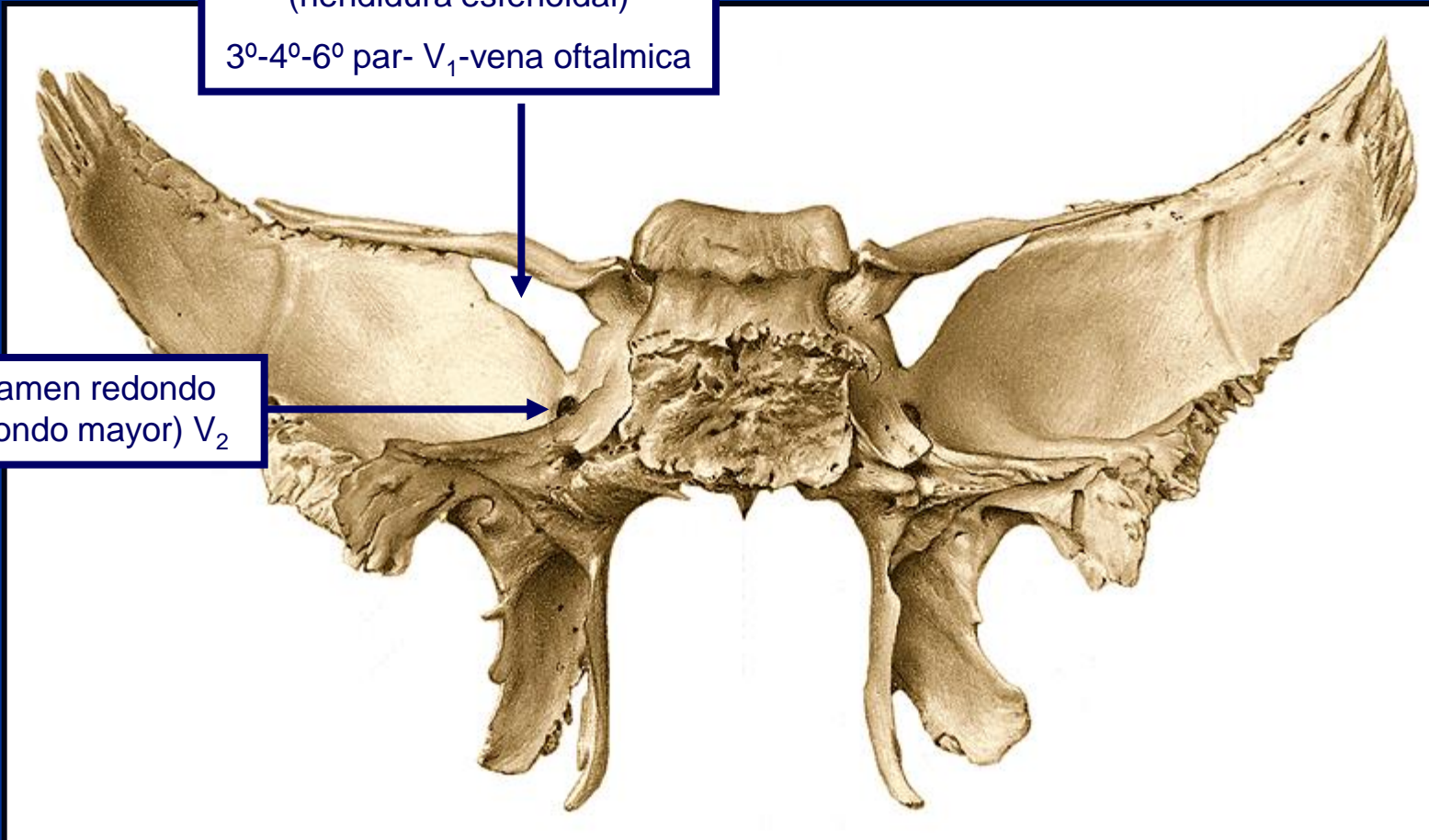


# Ala mayor

**borde medial :**

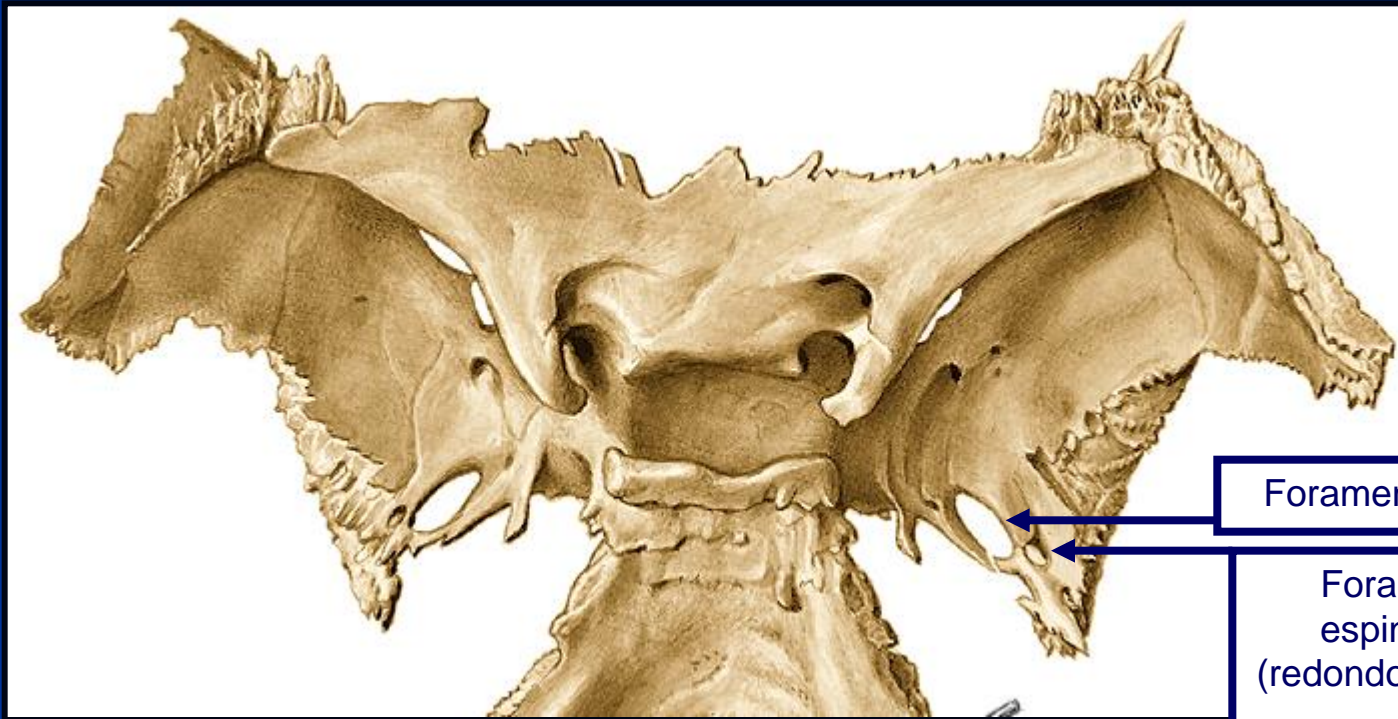
Fisura orbitaria superior  
(hendidura esfenoidal)  
3<sup>o</sup>-4<sup>o</sup>-6<sup>o</sup> par- V<sub>1</sub>-vena oftálmica

Foramen redondo  
(redondo mayor) V<sub>2</sub>



# Ala mayor

borde medial :



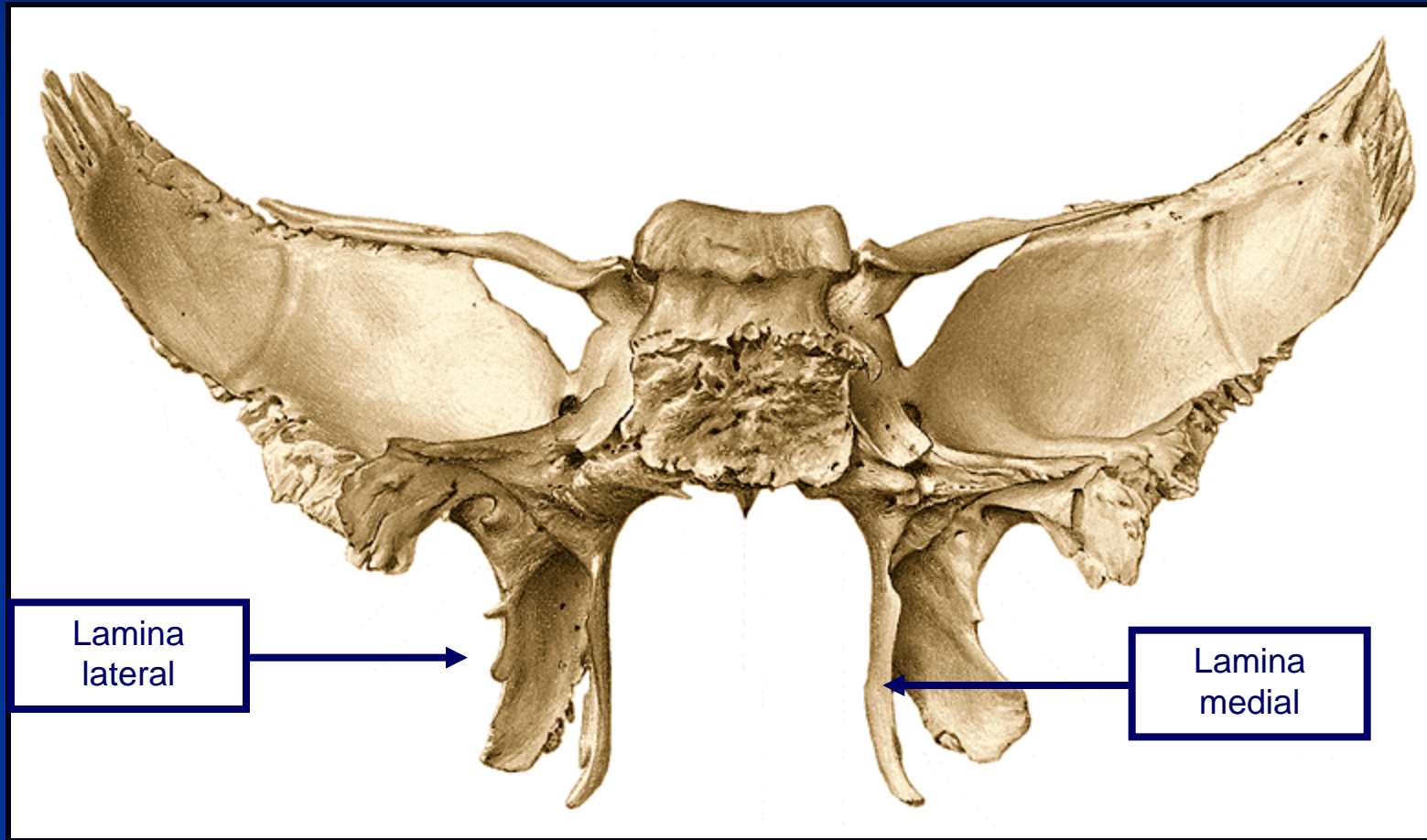
Foramen oval ( $V_3$ )

Foramen  
espinoso  
(redondo menor)

Art.meningea  $\frac{1}{2}$



# Procesos pterigoídeos





Unirse a este wiki

Cambios Recientes

Administrar wiki

Búsqueda

All Pages

- home
- actividad grupo 1
- actividad grupo 2
- actividad grupo 3
- Apuntes de Neuroanatomía
- Biblioteca
- cerebro externo
- Clases
- recursos (videos)

home [Página](#) [Discusión](#) [Historia](#) [Notificarme](#)

## BIENVENIDOS A ANATOMIA-UBB

Estimados Alumnos: En esta plataforma encontrarán los recursos necesarios para lograr una mejor comprensión de los temas del Aula de Anatomía.



Copyright © 2008 by Elsevier Inc.